

# PHILIPS

Replacement  
shaving heads

SH30

PowerCut blades

Fits S1000, S2000, S3000 series

Fits S5000 series rounded shape

SH30/51



## Reset your shaver to new

Replace every 24 months for a shaver like new

Within two years, your shaver heads cut 9 million hairs on your face. Replace the shaver heads and get back to 100% performance.

### Easy to use

- Easy to replace shaving heads
- Change heads every 24 months for the best performance

### Compatibility

- For shavers series 1000, 2000, 3000 and 5000 rounded shape

### Performance

- Consistent and clean shave

### Sustainability

- Recyclable packaging\*

# Highlights

## PowerCut Blades



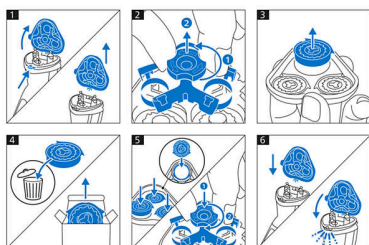
27 self-sharpening blades consistently cut each hair right above skin level for a smooth, even finish every time. Our self-sharpening blades stay like new for 2 years.

## Compatibility



Check the back of your shaver's handle to confirm replacement head. Need help? Visit [philips.com/accessories](https://philips.com/accessories)

## Simple replacement



1. Open the shaver by pressing the "release" button; 2. Remove the retainer by turning the lock counterclockwise; 3. Take out the old

shaving heads and carefully insert replacements; check that the heads align exactly in the setting; 4. Replace the retainer and secure it by turning the lock clockwise; 5. When you close the shaving head properly, you will hear it click into place.

## Reset your shaver to new



Replace the shaver heads every 24 months to ensure best performance or your device.

## Recyclable packaging\*



At Philips we strive for sustainability in all aspects of product development. This packaging comes without plastic parts and is fully recyclable\*.

# Specifications

## Shaving heads

Shaving heads per packaging: 3

Fits product type: Shaver series S1000, Shaver series S2000, Shaver series S3000, Shaver series S5000 rounded shape

