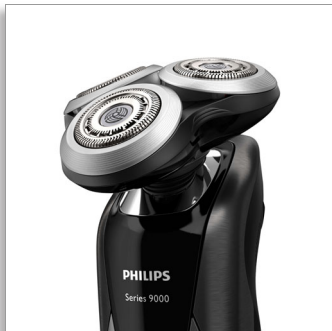




Philips Shaver series 9000
Shaving heads

Discontinued
Buy SH91 instead



SH90/81

SH90 has been replaced by SH91

Change heads every 2 years for best results

Within two years your shaver heads cut 9 million hairs on your face. Replace the shaver heads and get back to 100% performance. Compatible with the Series 9000 Shaver.

Improved Version

- The easiest way to keep your shaver at best

Easy to use

- Reset your shaver after replacing shaving heads
- Easy to replace heads
- Replace your shaving heads in just two steps
- Reset your shaver to new

Single pass, precise shave

- Perfectly guides hairs for a close shave with V-Track blades
- Lifts hairs to cut comfortably close

PHILIPS

Highlights

Upgraded Solution



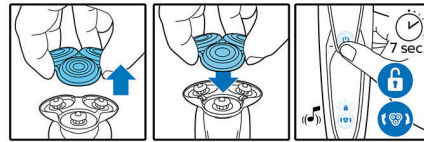
The upgraded solution makes the maintenance of your Philips Shaver easier than ever. This new format will allow you to install the new shaving heads in just two steps, facilitating thorough cleaning of the shaver and optimizing your daily shave.

Replacement reminder



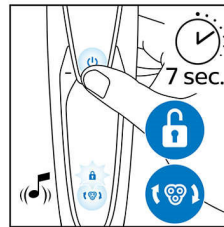
The latest Philips shavers have an inbuilt replacement reminder in the form of a shaving unit symbol. This symbol will light up and indicate you when to replace shaving heads.

Simple replacement



1. Pull the shaving head holder off. 2. Replace the shavings heads with new ones. 3. Reattach the shaving head holder. 4. To reset the shaver, press and hold the on/off button for more than 5 seconds.

How to reset your shaver



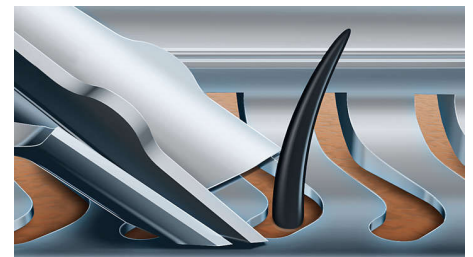
After replacing shaving heads, you can reset the replacement reminder by pressing the on/off button for more than 7 seconds. Otherwise, replacement trigger will turn off automatically after 9 successive shaves.

Reset your shaver to new



To get back to 100% performance, replace your shaving heads every 2 years.

V-Track Precision Blades



The patented V-Track Precision Blades gently position each hair in the best cutting angle, even hairs that are flat or different lengths. This allows you to cut 30% closer in less strokes leaving your skin in great condition.

Super Lift & Cut Action



Shave closer with the dual-blade Super Lift & Cut action. The first blade raises each hair while the second blade comfortably cuts below skin level, for really smooth results.

Shaving heads
Discontinued Buy SH91 instead

SH90/81

Specifications

Shaving heads

- Fits product type: Shaver series 9000 (S9xxx), Shaver series 8000 (S8xxx)
- Upgraded shaving heads: SH90 has been replaced

by SH91

Accessories

- Included in pack: Shaving unit



Issue date 2022-08-25

Version: 9.9.1

EAN: 08 71010 38742 25

© 2022 Koninklijke Philips N.V.
All Rights reserved.

Specifications are subject to change without notice.
Trademarks are the property of Koninklijke Philips N.V.
or their respective owners.

www.philips.com

* Versus its Philips predecessor