



Philips Shaver series 9000
Wet and Dry electric
shaver

Pressure Guard sensor
Dual SteelPrecision blades
Dermatologically tested
360 D Flexing heads



S9987/50

Superior closeness*, personalised skin comfort with SkinIQ Technology

The most intelligent shaver powered by A.I gives you incredible skin comfort. Get feedback on shaving pressure to protect your skin, while cutting hair closer, even on 5-day beards. It senses, guides and adapts to your unique face.

For a convenient shave

- Powerful cleaning pod for maintenance and hygiene
- 60 minutes of shaving from a 1 hour charge
- Choose a convenient dry or refreshing wet shave
- Even up your moustache and sideburns

SkinIQ technology

- Helps you to shave with optimal pressure
- Adjusts to your beard for effortless shaving
- Master your technique with the Philips GroomTribe app
- Guides you to an improved technique with fewer passes

A close shave

- Follows the contours of your face
- Advanced precision for a closer shave*
- Smooth gliding for better skin protection

PHILIPS

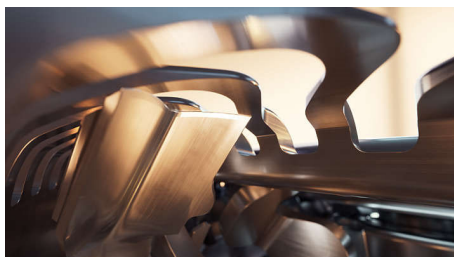
Highlights

Pressure Guard sensor



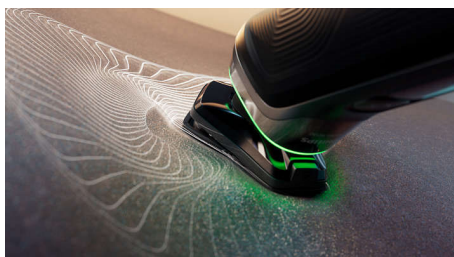
Using the right pressure is key for closeness and skin protection. Advanced sensors in the shaver read the pressure you apply, and the innovative light signal shows when you are pressing too hard or too little. For a personalised shave that is just right for you.

Dual SteelPrecision blades



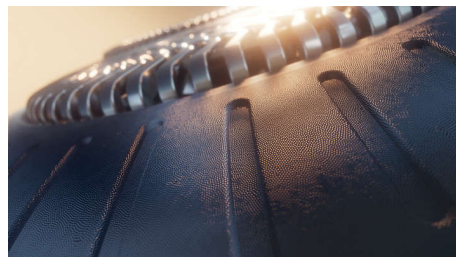
With up to 150.000 cutting actions per minute, the Dual SteelPrecision blades shave close. The 72 high-performance blades are self-sharpening and made in Europe.

Motion Control sensor



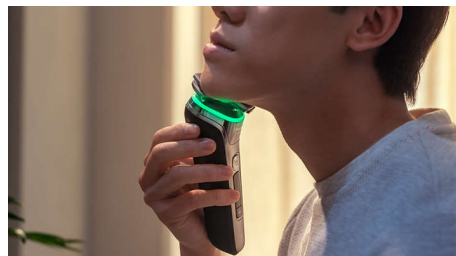
Motion-sensing technology tracks how you shave and guides you to a more efficient technique via our GroomTribe app. After just three shaves, the majority of men achieved a better shaving technique for fewer passes**.

Protective SkinGlide coating



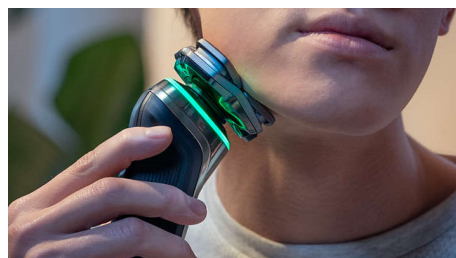
A protective coating lies between the shaver heads and your skin. Made of up to 2000 micro-spheres that coat every square millimetre. Minimise irritation by reducing 25% of friction on skin***.

Power Adapt sensor



The intelligent facial-hair sensor reads hair density 500 times per second. The technology auto-adapts cutting power for an effortless and gentle shave.

360 D Flexing heads



Designed to follow the contours of your face, this Philips electric shaver has fully flexible heads that turn 360° for a thorough and comfortable shave.

Personalisation via app



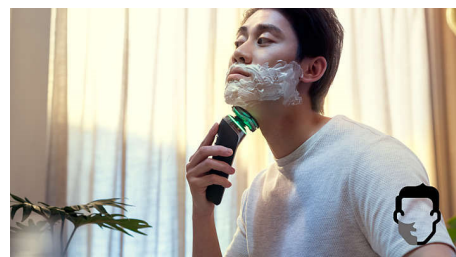
Pair your Philips electric shaver to the GroomTribe app and prepare to master your technique. Just track your progress and personalise your routine to achieve a shave that's both close and kind.

Cable-free Quick Clean Pod



10 x more effective than cleaning with water****, the powerful cleaning pod thoroughly cleans and lubricates your shaver in just 1 minute. Using it helps maintain shaver performance and increase hygiene.

Shave wet or dry



A wet and dry shaver that adapts to your preference. Choose a convenient dry shave, or pair with your favourite foam or gel for a refreshing wet shave.

Specifications

Ease of use

- Display: Advanced OLED display, Pressure guidance, Battery level indicator, Motion control indicator, Travel lock

Shaving Performance

- Contour following: 360 D Flexing heads
- Shaving system: Dual SteelPrecision blades
- SkinIQ technology: Pressure Guard sensor, Protective SkinGlide coating, Motion Control sensor, Power Adapt sensor

Accessories

- Maintenance: Cleaning brush

Design

- Colour(s): Dark chrome

Ease of use

- Cleaning: One-touch open, Fully washable
- Wet and Dry: Wet and dry use

Design

- Handle: Rubber grip

Power

- Automatic voltage: 100-240 V

Accessories

- Quick Clean Pod: Yes, 1 cartridge included

- Integrated pop-up trimmer
- Travel and storage: Travel case

Service

- 2 year warranty

Design

- Shaving heads: Angular

Power

- Battery type: Li-Ion
- Run time: 60 minutes
- Charging: 1 hour full charge, 5-min quick charge
- Max power consumption: 9 W

Software

- App: GroomTribe, Connects via Bluetooth®

Software

- Software update: Philips offers relevant software updates for a period of 2 years after the date of purchase

Service

- Replacement head SH91: Replace every 2 yrs with SH91

Software

- Smartphone compatibility: iPhone and Android™ devices



Issue date 2022-06-04

Version: 4.0.1

© 2022 Koninklijke Philips N.V.
All Rights reserved.

Specifications are subject to change without notice.
Trademarks are the property of Koninklijke Philips N.V.
or their respective owners.

www.philips.com

* versus predecessor Philips Series S9000
** Based on Philips Series S7000 and GroomTribe app users in 2019
*** Compared to non-coated material
**** comparing shaving debris after using cleaning fluid vs. water in the cartridge