

PHILIPS

Refurbished Wet and
dry electric shaver

Shaver series 5000

Refurbished product

ComfortCut Blade System

40 min cordless use/1 hr charge

Body groomer included

S5070



Wet or Dry, Protective Shave

Protects 10 X better versus a regular blade

The AquaTouch shaver protects your skin while you enjoy a refreshing shave. Our ComfortCut Blade System with rounded profile heads glides smoothly across, and they're designed to protect your skin.

Skin-friendly performance

- Guards while you trim
- Trims hair in every direction

Easy to use

- 40 minutes of cordless shaving
- 1 hour charging time
- 1 level battery and travel lock indicators
- 2 year guarantee, worldwide voltage and replaceable blades

A comfortable and close end result

- Rounded profile of heads designed to protect skin
- Get a comfortable dry or refreshing wet shave with Aquatec
- Rounded edges move smoothly over skin for a protective shave
- Heads flex in 5 directions for a fast, close shave

Get the most out of your shaver

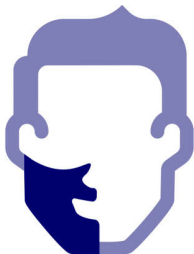
- Click-on trimmer for perfect moustache and sideburn trimming

Highlights

Skin Protection System

Shave closely without nicks and cuts. Our ComfortCut Blade System with rounded head profile glides smoothly across, while protecting your skin.

Aquatec Wet & Dry



Choose how you prefer to shave. With the Aquatec Wet & Dry seal, you can opt for a quick yet comfortable dry shave. Or you can shave wet – with gel or foam – even under the shower.

ComfortCut Blade System



Get a comfortable shave, wet or dry. Our ComfortCut blades with rounded profile heads glide smoothly across your skin while protecting it from nicks and cuts.

5 direction Flex Heads



5 direction Flex Heads with 5 independent movements ensure close skin contact for a fast and close shave even on the neck and jaw line.

SmartClick precision trimmer

Click on our skin-friendly precision trimmer to finish your look. It's ideal for maintaining your moustache and trimming your sideburns.

40 minutes of cordless shaving



You'll have 40+ minutes of running time – that's about 13 shaves – on a one-hour charge. This shaver only operates in cordless mode.

1 hour charging time



Shave for longer with every charge, thanks to our powerful energy-efficient, long-lasting battery. Do a quick charge for 5 minutes and you'll have enough power for one shave.

LED display



The intuitive display shows relevant information, enabling you to get the best performance out of your shaver: - 1 level Battery Indicator - Battery Low Indicator - Travel Lock Indicator

Skin protection system



The unique skin protection system guards even your most sensitive body areas, allowing you to comfortably trim hair as close as 0.5 mm without direct contact between the sharp edge of the blades and your skin.

Bi-directional trimmer and comb



Cut hair that grows in any direction using the bi-directional trimmer and 3 mm comb. Pre-trimming is recommended for thicker hair.

Specifications

Accessories

SmartClick: Precision trimmer
Maintenance: Protective cap
Body groomer included

Power

Run time: 40 min/13 shaves
Automatic voltage: 100-240 V
Battery Type: NiMH
Charging: 1 hour full charge, Quick charge 5

min for 1 shave

Stand-by power: 0.1 W
Max power consumption: 9 W

Design

Colour: Charcoal Grey - Aquatic Blue
Handle: Ergonomic grip and handling

Service

Replacement head: Replace every 2 yrs with SH50
2 year guarantee

Shaving Performance

Contour following: 5 direction Flex Heads
SkinComfort: SkinProtection System, Aquatec Wet and Dry
Shaving system: ComfortCut Blade System

Ease of use

Display: 1 level battery indicator, Battery low indicator, Travel lock indicator
Cleaning: Fully washable
Operation: Unplug before use

