

# PHILIPS

Wet and dry  
cordless shaver

SatinShave  
Advanced

Single foil shaver

8hr recharge

4 accessories

BRL140/51



## Glides smoothly for a skin friendly shave

Enjoy a close, comfortable shave on your legs and body. The SatinShave Advanced ladyshaver gives you smooth skin even in the bath or shower. Achieve hair-free skin easily and conveniently.

### Easy to use

- Wet & dry use for maximum convenience
- Battery indicator light shows when charging & battery level
- Travel pouch
- Rechargeable Lithium-Ion battery for 1 hour of cordless use
- Ergonomic S-shaped handle

### Personalized hair removal solutions

- Efficiency cap ensures more hairs shaved in a single pass
- Soft glide cap ensures a more gentle shave
- Trimming comb to achieve desired hair length

### A smooth, skin-friendly shave

- Floating foil provides a closer, more even shave
- Pearl-tip trimmers protect your skin from irritation

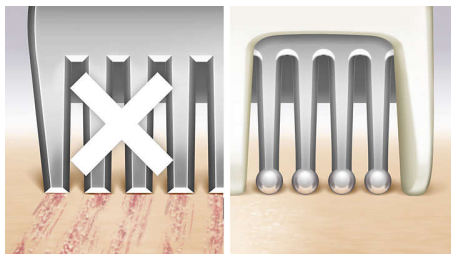
## Highlights

### Floating foil



The floating foil glides seamlessly along your body's curves and contours, maintaining close contact with the skin for an even shave.

### Pearl-tip trimmer



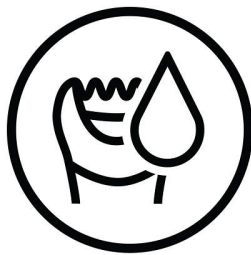
The rounded pearl-tip trimmers in front of and behind the shaving foil ensure the shaver glides smoothly to prevent irritation.

### Ergonomic S-shaped handle



The ergonomic S-shaped handle is easy to steer for maximum control and better reach with natural and precise movements, all over your body.

### Wet and dry use



For gentle and comfortable use during your shower or bath routine with an anti-slip grip.

### Battery indicator light



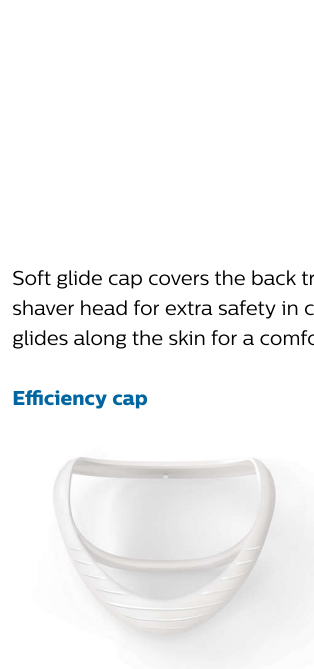
Battery indicator light alerts you as to when your shaver is charging and when it needs to be recharged, so you're never surprised by a low battery mid-treatment.

### Trimming comb



For more convenience, it includes a trimming comb to trim and shape delicate areas

### Soft glide cap



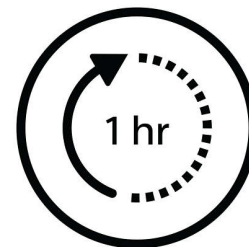
Soft glide cap covers the back trimmer on the shaver head for extra safety in curvy areas and glides along the skin for a comfortable shave.

### Efficiency cap



Efficiency cap gently pulls the skin taut, guiding more hair into the shaving foil for a more effective shave.

### Lithium-Ion battery



Rechargeable Lithium-Ion battery provides 1 hour of cordless use after an 8 hour charge.

### Travel pouch

Travel pouch for storage and transport.

# Specifications

## Accessories

**Pouch:** Basic pouch

**Cleaning brush**

**Trimming comb**

**Soft glide cap**

**Efficiency cap**

## Power

**Charging:** Rechargeable, 8 hours charging time

**Battery Type:** Lithium-ion

**Usage time:** 1 hour

## Technical specifications

**Voltage:** 8 V

**Material foil:** Nickel

**Number of shaving foils:** 1

## Ease of use

**Handle:** Ergonomic

**Cordless**

**Battery indicator:** Battery low, Battery charging,

Battery full

**Wet and dry use**

## Performance

**Shaving head:** Single foil shaver

**Skin care features:** Rounded pearl tip trimmers

