

# PHILIPS

14-in-1, Face, Hair  
and Body

Multigroom series  
7000

14 tools

DualCut technology

Up to 180 min runtime

Showerproof



MG7745/15

## Ultimate styling & precision

14-in-1 premium trimmer for ultimate versatility

Perfect your personal style with our most precise and versatile trimmer. 14 premium tools empower you to craft your unique style, from head to toe. Enjoy maximum precision with DualCut blades and added control with a no-slip rubber grip.

### Easy to use

- Store it and stay organized
- Warranty for purchase protection
- Showerproof for convenient use in the shower and cleaning
- Easy to grip

### Cutting performance

- Maximum precision with 2x more blades

### Versatility

- Get the details right
- Keeps nose and ear hair at bay
- Cut hair to your length
- Say goodbye to unwanted body hair
- Precision shaver perfects the edges of cheeks, chin and neck
- 14 pieces to trim your face and head
- Self-sharpening blades for a smooth result

# Multigroom series 7000

14-in-1, Face, Hair and Body

MG7745/15

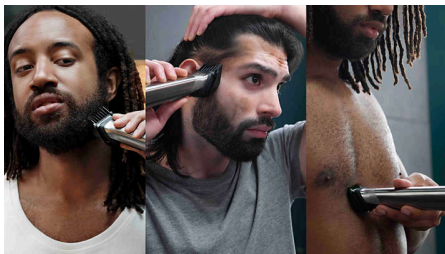
## Highlights

### DualCut technology



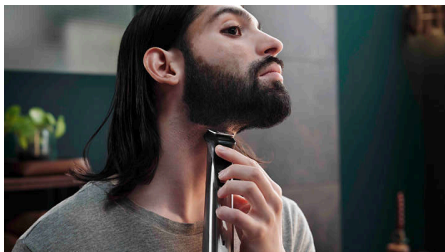
This all-in-one hair trimmer features advanced DualCut Technology for maximum precision. It comes with double blades, and is designed to stay as sharp as day 1.

### 14 tools for face, hair & body



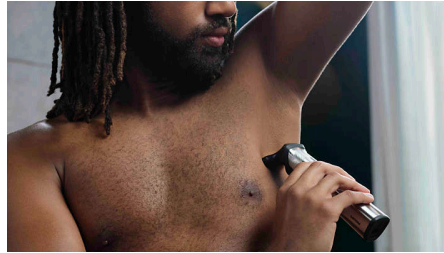
The Philips Multigroom 7000 all-in-one hair trimmer comes with 14 attachments to provide a full-body grooming solution.

### Full-metal trimmer



Create clean, straight lines and evenly trim through the thickest hair thanks to the body and beard trimmer's precise steel blades. These non-corrosive blades won't rust, and they self-sharpen to last longer.

### Bodyshaver with skin protector



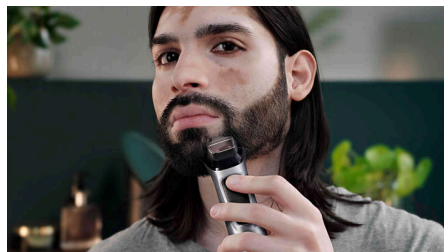
Shave comfortably below the neck, with our unique skin protector system that guards even your most sensitive body areas and lets you shave to a closeness of 0.5mm

### Precision shaver



Use the precision shaver after trimming, to perfect the edges of your cheeks, chin and neck.

### Full-metal detailer



The narrow design of the steel precision groomer makes it easy to precisely edge and finish small details.

### Nose and ear trimmer



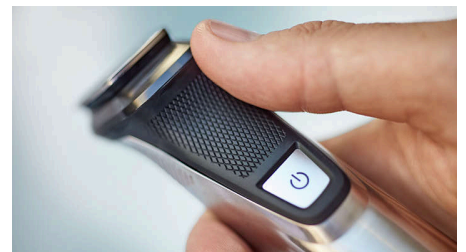
Avoid nicks and cuts, as the all-in-one trimmer quickly removes unwanted nose and ear hair.

### 8 Impact-resistant combs



Quickly touch up your face and hair with the eight reinforced cutting guards. 2 stubble combs for 1mm and 2mm trimming, an adjustable beard comb, 3 hair combs at 9mm, 12mm and 16mm, and 2 body combs for 3mm and 5mm grooming.

### Soft rubber grip



Your trimmer is easy to hold and manoeuvre, with a rubber ergonomic grip for more controlled trimming.

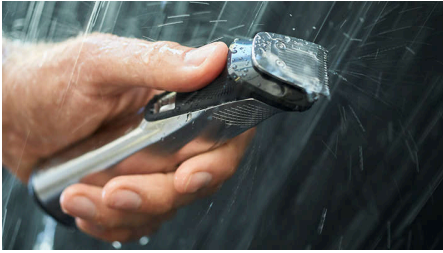
## Multigroom series 7000

14-in-1, Face, Hair and Body

MG7745/15

# Highlights

### Showerproof



This trimmer is designed to be water-resistant, so that you can use it comfortably in the shower and easily clean it under the tap.

### Storage pouch



Declutter your bathroom and gym bag, and keep all your attachments in one place, with the small storage pouch for easy organization and travel.

### 2-year worldwide guarantee



All of our grooming products are built to last. They come with a 2 year warranty, never need to be oiled and are compatible with any voltage worldwide.

# Multigroom series 7000

14-in-1, Face, Hair and Body

MG7745/15

## Specifications

### Create the look you want

**Styling tools:** Metal trimmer, Detail metal trimmer, Precision shaver, Nose & ear trimmer, Bodyshaver, Body skin protector attachment, 3-7mm beard adjustable comb, 2 stubble combs, 3 hair combs, 2 body combs

**Number of tools:** 14 tools

**Bodygroom/Hairclipping/Facial:** Long beard, Short beard, Stubble look, Sharp lines, Detailed styling, Goatee

### Accessories

**Pouch:** Storage pouch

**Maintenance:** Cleaning brush

### Power

**Charging:** 5 min quick charge, 3 hours full charge

**Battery type:** Lithium-ion

**Run time:** 3 hours

**Automatic voltage:** 100-240 V

### Design

**Handle:** No-slip rubber grip

### Service

**2-year warranty**

### Cutting system

**DualCut technology:** Cut in two directions

**Self-sharpening blades**

### Ease of use

**Display:** Charging indicator, Battery low indicator

**Wet & Dry:** Showerproof and easy cleaning

**Maintenance free:** No oil needed

