

Philips StyleShaver  
shaving foil

QS6100/50



## Keep a perfect style

Change shaving foil every 12 months for best results

### Easy to use

- Dual shaver with trimmer shaves even the toughest beards

### Provides maximum ease of use

- 100% waterproof for use in the shower and easy cleaning

### Replace and renew

- Change foil every 12 months for best results

# PHILIPS

# Specifications

## Shaving foil

- Fits product types: QS6140, QS6160

## Shaving foil

- Shaving foil per packaging: 1

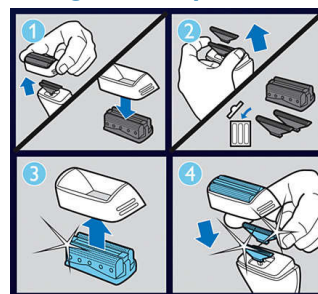
# Highlights

## 100% waterproof



Trim and shave where you want to, wet or dry. And when you've finished, just rinse it off under the tap.

## Change foil every 12 months



1. detach the shaver end of your Styleshaver. 2. Remove the old foil and cutters. 3. Place the new foil in the holder. 4. Place the new cutters into your Styleshaver and then click on the new holder and foil.

## Dual foil shaver with trimmer



The dual foil shaver makes it easy to clean up stubble around your beard, even on your neck. The mid-trimmer catches longer, tougher hairs and the 2 floating foils shave everything else perfectly smooth.



Issue date 2022-06-03

Version: 3.1.1

EAN: 08 71010 35753 20

© 2022 Koninklijke Philips N.V.  
All Rights reserved.

Specifications are subject to change without notice.  
Trademarks are the property of Koninklijke Philips N.V.  
or their respective owners.

[www.philips.com](http://www.philips.com)