

PHILIPS

Shaving unit

Shaver series 7000

SensoTouch

DualPrecision blades

Replacement unit

Fits SensoTouch 2D (RQ11xx)

RQ11/50



Keep a close shave

Change heads every 2 years for the best results

Within two years your shaver heads cut 9 million hairs on your face. Replace the shaver heads and get back to 100% performance.

Follows the unique contours of your face

- GyroFlex 2D system adjusts easily to the curve

Compatibility

- Replacement heads for SensoTouch 2D shavers

Sensationally smooth shave

- Shavers with Super Lift & Cut Action

An electric shaver that takes care of your skin

- Aquatec seal for comfortable dry shaves and refreshing wet shaves
- Smooth, low-friction SkinGlide to minimise irritation

Simple replacement

- Easy click off, click on

Highlights

Compatible with SensoTouch 2D



RQ11 replacement heads are compatible with SensoTouch 2D (RQ11xx) shavers.

GyroFlex 2D



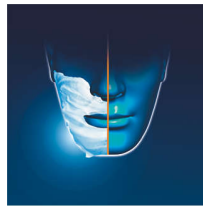
The GyroFlex 2D contour-following system of the shaver adjusts easily to the curves of your face, minimising pressure and irritation for a close shave.

Super Lift & Cut Action



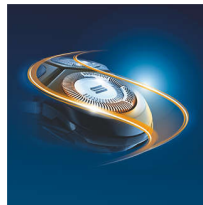
The dual-blade system built into the Philips electric shaver lifts hairs to cut comfortably below skin level for a closer shave.

Aquatec



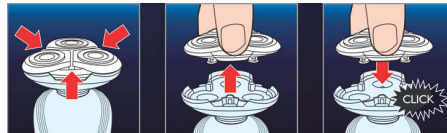
The Aquatec wet and dry seal of the electric shaver lets you choose how you prefer to shave. You can get a comfortable dry shave or a refreshing wet shave using a shaving gel or foam for extra skin comfort.

SkinGlide



The low-friction SkinGlide shaving surface of the electric shaver slides smoothly along your skin for a close, easy shave.

Easy click off, click on



Simply pop the head of your Philips shaver open and use the included cleaning brush to sweep away the loose hairs.

Specifications

Shaving heads

Fits product type: SensoTouch 2D (RQ11xx)

Shaving units per packaging: 1

