

Philips Shaver series 3000  
Shaving heads

#### ComfortCut blades

Fits S3000 (S3xxx)

Fits S1000 (S1xxx)

Fits Star Wars Shaver SW37xx

**SH30/50**

# Reset your shaver to new

Change heads every 2 years for the best results

Within two years your shaver heads cut 9 million hairs on your face. Replace the shaver heads and get back to 100% performance. Compatible with the Series 3000 and Series 1000 Shaver.

#### Easy to use

- Easy to replace shaving heads
- Replace your shaving heads in just two steps
- Reset your shaver after replacing shaving heads

#### Compatibility

- Replacement heads for Series 3000 and 1000 Shaver

# PHILIPS

## Shaving heads

ComfortCut blades Fits S3000 (S3xxx), Fits S1000 (S1xxx), Fits Star Wars Shaver SW37xx

# Specifications

### Shaving heads

- Shaving heads per packaging: 3
- Fits product type: Shaver series 3000 (S3xxx), Shaver series 1000 (S1xxx)

### Cleaning

- Usage: Use cleaning spray HQ110

SH30/50

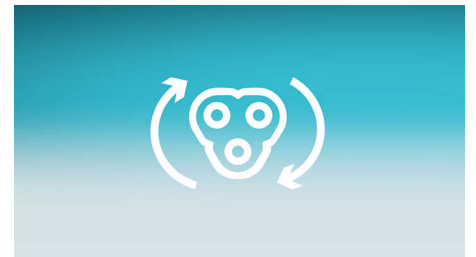
# Highlights

### Compatibility



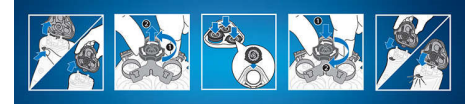
SH30 (3 pack) replacement heads are compatible with Series 3000 Shaver (S3xxx), Series 1000 Shaver (S1xxx) and Star Wars shaver SW3700.

### Replacement reminder



The latest Philips shavers have an inbuilt replacement reminder in the form of a shaving unit symbol. This symbol will light up and indicate when to replace the shaving heads.

### Simple replacement



1. Open the shaver by pressing the "release" button;
2. Remove the retainer by turning the lock anticlockwise;
3. Take out the old shaving heads and carefully insert the replacements; check that the heads align exactly in the setting;
4. Replace the retainer and secure it by turning the lock clockwise;
5. When you close the shaving head properly, you will hear it click into place.

### Reset your shaver to new



The latest Philips shavers have an inbuilt replacement reminder, which will tell you when to replace the shaving heads. After replacing the shaving heads, you can reset the replacement trigger by pressing the on/off button for more than 7 seconds. Otherwise, the replacement trigger will be turned off automatically after 9 successive shaves.



Issue date 2023-03-30

Version: 13.13.1

© 2023 Koninklijke Philips N.V.  
All Rights reserved.

Specifications are subject to change without notice.  
Trademarks are the property of Koninklijke Philips N.V.  
or their respective owners.

[www.philips.com](http://www.philips.com)