

# PHILIPS

Wet and Dry electric shaver

SatinShave Essential

for legs

Single foil shaver

Battery operated

HP6342/00



## Safe and easy shaving

With this all-round shaver you can shave your whole body quickly, easily and safely. The secret is the small shaving head that cuts quickly while protecting your skin. A soft and smooth feeling after every use!

### Easy to use

- Battery operated
- Wet & dry for use in bath or shower

### Effortless control

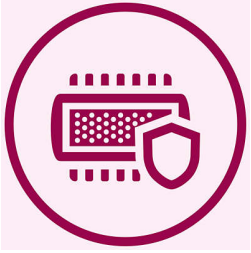
- Profiled, ergonomic grip

### Safe shaving

- Safe shaving system for ultimate skin protection

## Highlights

### Safe shaving system



The gentle small shaving head protects your skin leaving it smooth and soft

### Slim ergonomic design

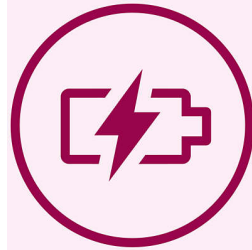


For comfortable handling

### Wet & dry use

For a gentle and comfortable use during your shower or bath routine with anti slip grip for optimal wet & dry use.

### Battery operated



Shave anywhere with this cordless lady shaver.

### Technical specifications

**Voltage:** 2x 1.5 V

**Number of shaving foils:** 1

### Accessories

Cleaning brush

2 x AA batteries

Trimming comb

Small shaving head

Travel cap

Luxury pouch

Efficiency cap

### Ease of use

Handle: Ergonomic

Cordless

Wet and dry use

### Performance

Shaving head: Single foil shaver

