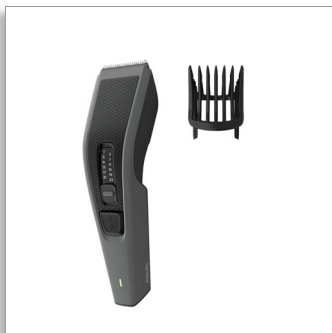




Philips Hairclipper series  
3000  
Hair clipper

**Stainless steel blades**  
13 length settings  
75mins cordless use/8h charge



HC3520/15

## Easy, even haircut

Faster clipping without clogging\*

Get an easy haircut, quick and easily. DualCut technology with self-sharpening blades clips twice as fast\*. Trim-n-Flow technology features a comb designed to prevent clogging - so you can finish your style in one go.

### Easy to use

- Quick release blades for easy cleaning
- Ergonomic design for comfort and control
- Up to 75 minutes of cordless use

### Performance

- Trim-n-Flow technology for continuous cutting
- Maximum precision with double blades
- Get a perfect but protective trim

### Precise length control

- Adjusts to different length settings

### Built to last

- The blades never need oiling
- Warranty for purchase protection

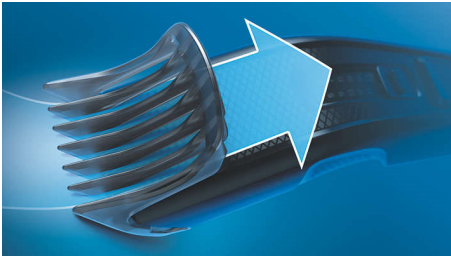
**PHILIPS**

Hair clipper  
Stainless steel blades 13 length settings, 75mins cordless use/8h charge

HC3520/15

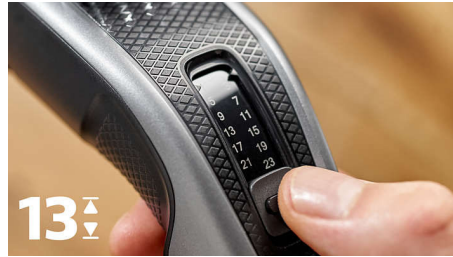
# Highlights

## Trim-n-Flow technology



Our Philips hair clipper with new, innovative comb is designed to prevent hair from getting stuck. So you can cut your hair, from start to finish, without interruptions.

## 13 lock-in length settings



Cut your hair to the exact length you want. Just select one of 12 length settings between 1mm to 23mm at 2mm increments, or remove the comb for a close 0.5mm trim.

## Easy to clean



Clean your electric hair clippers with ease. Simply click open the head to release and clean the blades.

## DualCut Technology



The Philips Hairclipper 3000 features advanced DualCut Technology for maximum precision. It comes with double blades, and is designed to stay as sharp as day 1.

## Cordless & corded use



Don't get tangled up in your cordless hair clippers – one 8 hour charge provides up to 75 minutes of powerful clipping time. Or keep it plugged in for uninterrupted trimming.

## Zero maintenance



Clipping power that's easy to maintain—our blades never need oiling.

## Stainless steel blades



The self-sharpening steel blades are designed to be incredibly long-lasting. Even after 5 years they cut with the same precision and accuracy as day 1.

## Comfortable grip



Philips clippers have a textured grip designed for easy handling, so you can cut your hair with control and in comfort.

## 2-year worldwide guarantee



All of our grooming products are built to last. They come with a 2 year warranty, never need to be oiled and are compatible with any voltage worldwide.

Hair clipper  
Stainless steel blades 13 length settings, 75mins cordless use/8h charge

HC3520/15

# Specifications

## Accessories

- Maintenance: Cleaning brush
- Comb: Adjustable hair comb

## Power

- Automatic voltage: 100-240 V
- Run time: Up to 75 minutes
- Charging: 8 hours full charge
- Battery type: Ni-MH

## Design

- Handle: Ergonomic grip & handling

## Consumer Trade Item

- Height: 22.4
- Width: 14
- Length: 7
- Net Weight: 0.274
- Gross Weight: 0.392
- GTIN: 8710103855439
- Country of origin: ID
- Harmonized system code: 85102000

## Outer Carton

- Height: 23.8
- Width: 15.1
- Length: 29.1
- Net Weight: 1.096
- Gross Weight: 1.722
- GTIN: 18710103859724

## Service

- 2-year worldwide guarantee

## Cutting system

- Cutting element: Stainless steel blades
- Cutter width: 41mm
- Trim-n-Flow technology
- Range of length settings: From 0.5 to 23 mm
- Number of length settings: 13
- Precision (size of steps): By 2mm

## Ease of use

- Maintenance free: No oil needed
- Cleaning: Removable cutter, Washable blades
- Operation: Corded & Cordless use



Issue date 2023-10-21

Version: 3.3.1

EAN: 87 10103 85543 9

© 2023 Koninklijke Philips N.V.  
All Rights reserved.

Specifications are subject to change without notice.  
Trademarks are the property of Koninklijke Philips N.V.  
or their respective owners.

[www.philips.com](http://www.philips.com)

\* Faster clipping without clogging - tested on cut hair length up to 19mm, compared to predecessor comb  
\* Cuts 2 times faster - versus its Philips predecessor