

# PHILIPS

8-in-1 Beard & Hair trimmer

Multigroom series  
5000

5 attachments & 3 combs  
corded&cordless, waterproof  
high-performance blade  
50mins cordless use/1h charge

QG3371/16



## All-in-one beard & hair trimmer

8 in 1 waterproof trimmer for maximum versatility

Groom your beard, hair, mustache and sideburns with this waterproof all-in-one trimmer. 8 different attachments give you the freedom to create different styles on your face and hair, while turbo power trims through thick hair gently.

### Easy to use

- Skin-friendly, high-performance blades for a gentle trim
- Trimmer can be rinsed clean under the tap
- 50 minutes of cordless use on a 1-hour charge
- Higher cutting speed to power through thick hair
- Easily store, or travel with the trimmer and attachments

### Versatile

- Trim your face, neck and sideburns to complete your look
- 18 adjustable lengths (1-18 mm) for an even beard or stubble
- Define sharp lines around your beard or goatee
- Shave small areas on your cheeks and chin with precision
- Tidy up your eyebrows and sideburns to an even length
- Gently get rid of unwanted nose and ear hair
- Create a range of hairstyles with the dedicated 41mm clipper
- 18 adjustable lengths (3-20 mm) for an even haircut

# Highlights

**Full size metal trimmer**

Use the full size metal trimmer without a comb to complete your style and get clean, sharp lines around the edges of your beard.

**Beard & stubble comb**

Trim your beard to exactly the length you want, by locking in the setting that suits your desired look. The beard & stubble comb offers 18 length settings from 1mm to 18mm, with precisely 1mm between each setting.

**Detail trimmer**

Create fine lines, contours and details to define or change your style.

**Detail foil shaver**

Get rid of unwanted hairs with precision on small areas of your cheeks and chin, for a clean finish.

**Detail comb**

Precisely comb and trim your eyebrows and sideburns for a finished look.

**Extra wide clipper**

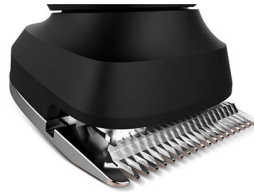
Cut through your head of hair quickly with the 41mm high-performance clipper.

**Hair comb**

Keep your haircut in style, or create a new one, by trimming to different lengths. The hair comb offers 18 length settings from 3mm to 20mm, with precisely 1mm between each setting.

**Nose trimmer**

Remove unwanted nose and ear hair, easily and comfortably.

**Skin-friendly blades**

Get a gentle trim that is high on performance. Blades are self-sharpening and made of finely ground chromium steel, giving you lasting performance. Their rounded tips and combs ensure smooth, protected contact with your skin.

**50 min run time, 1-hr charge**

Our advanced charging system gives you two convenient options: charge for one hour and you'll get up to 50 minutes of running time, or do a 5-minute quick charge for one full trim.

**Turbo power**

Power through even the thickest hair. Turbo power helps you cut the longest, most dense parts of your hair by increasing the cutting speed.

**Fully washable**

Simply rinse the blades and combs after each use for long-lasting performance.

**Storage pouch**

Keep your all-in-one trimmer organized with the convenient pouch, which holds and protects the trimmer and all attachments when you're on the go.

# Specifications

## Create the look you want

**Number of length settings:** 18 integrated length settings

**Styling tools:** Full size metal trimmer, Detail trimmer, Precision shaver, Rotary nose trimmer, Wide hair clipper, 18-setting beard&stubble comb, Detail & eyebrow comb, 18-setting hairclipper comb

**Number of attachments/combs:** 5 attachments & 3 combs

**Bodygroom/Hairclipping/Facial:** Moustache, Long beard, Short beard, Stubble look, Sharp lines, Detailed styling, Goatee

**Hairclipping/Facial styling:** Moustache, Long beard, Short beard, Stubble look, Detailed styling, Goatee

## Accessories

**Pouch:** Storage pouch  
**Oil in pack**

## Power

**Charging:** 1 hour full charge, 5 min quick charge

**Run time:** 50 minutes

**Automatic voltage:** 100-240 V

**Battery type:** Ni-MH

## Design

**Handle:** Easy grip

**Color:** Black with brushed chrome deco panel

## Service

**2-year guarantee**

## Ease of use

**Display:** Battery full indicator, Charging indicator, Battery low indicator

**Wet & Dry:** Fully washable

## Trimming performance

**Turbo power button:** For increased performance

**High-performance blade:** For a gentle trim

