

Philips Norelco Shaver  
series 9000  
Shaving heads

**Discontinued**  
Buy SH91 instead

SH90/62



## SH90 has been replaced by SH91

Change heads every year for best results

Within one year your shaver heads cut 4.5 million hairs on your face. Replace the shaver heads and get back peak performance. Compatible with the Series 9000 Shaver.

### Easy to use

- Reset your shaver after replacing shaving heads
- Easy to replace heads
- Replace your shaving heads in just two steps
- Reset your shaver to new

### Compatibility

- Replacement heads for Shaver series 9000

### Perfection in every pass

- Our best shaving system on 1-3 day beard

**PHILIPS**  
**NORELCO**

Shaving heads  
Discontinued Buy SH91 instead

# Highlights

## Compatible with Series 9000



SH90 replacement heads are compatible with Shaver series 9000 (S9\_\_\_), 8000 (S8\_\_\_), Star Wars shaver SW9700 and SW6700.

## V-Track blade system PRO

Get the perfect close shave. The V-Track Precision PRO Blades gently positions each hair in the best cutting position, from 1 day up to 3 day beard and even the flat laying and different length of hairs. Cuts 30% closer\* in less strokes leaving your skin in great condition.

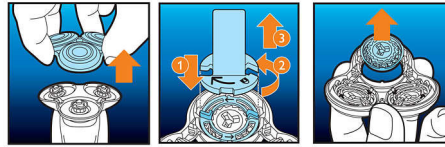
## Replacement reminder



The latest Philips shavers have an inbuilt replacement reminder in the form of a shaving unit symbol. This

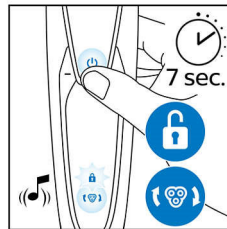
symbol will light up and indicate you when to replace shaving heads.

## Simple replacement



1. Pull the shaving head holder off. 2. Replace the shavings heads with new ones. 3. Reattach the shaving head holder. 4. To reset the shaver, press and hold the on/off button for more than 5 seconds.

## How to reset your shaver



After replacing shaving heads, you can reset the replacement reminder by pressing the on/off button for more than 7 seconds. Otherwise, replacement trigger will turn off automatically after 9 successive shaves.

## Reset your shaver to new



To get back to 100% performance, replace your shaving heads every 12 months.

SH90/62

# Specifications

## Shaving heads

- Fits product type: Shaver series 9000 (S9\_\_\_)
- Shaving heads per packaging: 3
- Upgraded shaving heads: SH90 has been replaced by SH91

## Accessories

- Included in pack: Retaining ring holder



Issue date 2022-08-25

Version: 10.10.1

EAN: 00 07502 00616 07

© 2022 Koninklijke Philips N.V.  
All Rights reserved.

Specifications are subject to change without notice.  
Trademarks are the property of Koninklijke Philips N.V.  
or their respective owners.

[www.philips.com](http://www.philips.com)

\* Versus its Philips predecessor