



Philips Bodygroom series
5000
Showerproof body
groomer

Skin friendly shaver

3 combs, 3-7mm
60mins cordless use/1h charge
Back attachment



BG5020/13

Smooth full-body shave

Extra long back attachment for hard-to-reach areas

The Series 5000 is designed to power through hair, without compromise on skin comfort. Whether on the chest or hard-to-reach areas like the back. You can use the skin friendly shaver or trim by clicking on the 3, 5 or 7mm length combs.

Easy to use

- Use wet or dry
- 60 minutes cordless use after an 1-hour charge
- Easy to grip
- Reach those hard-to-get places

Skin-friendly performance

- Protects skin while shaving or trimming
- Protective full body grooming
- Trims hair in every direction

Built to last

- Warranty for purchase protection

PHILIPS

Showerproof body groomer
Skin friendly shaver 3 combs, 3-7mm, 60mins cordless use/1h charge, Back attachment

BG5020/13

Highlights

Full body grooming



Now you can confidently trim and shave everywhere on your body with one tool. This Philips full body trimmer for men cuts hair at 3 different lengths for clean, even results on your back, shoulders, chest, abs, underarm, arms, groin and legs.

Skin-friendly body shaver



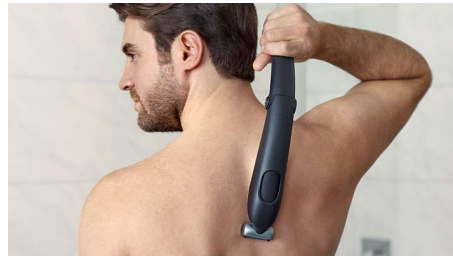
The men's body groomer designed to capture short, long and thick hair in a single stroke. The shaver head features patented rounded tips and a hypo-allergenic foil to protect your skin from cuts and nicks.

Bi-directional trimming guards



The shaving system comes with 3 attachable combs for 3mm, 5mm, and 7mm trimming, or use without a comb for a closer finish. Pre-trimming is recommended for thicker hair.

Extra-long back attachment



Conveniently remove back hair. This attachment has been specially designed for convenient back grooming.

Rechargeable battery power



High-power Li-ion battery for full body use, with 60 minutes of cordless use after an 1-hour charge. The battery light indicates power status, when the battery is low or full.

100% Showerproof



Your wet and dry body groomer is 100% water resistant, so you can use it in or out of the shower. For best results, use on dry hair before showering.

Ergonomic grip



Your body groomer is easy to hold and manoeuvre, with a rubber ergonomic grip for more controlled trimming.

Built to last



All of our grooming products are built to last. They come with a 2 year warranty and they never need to be oiled.

Specifications

Power

- Battery type: Lithium-ion
- Run time: 60 minutes
- Charging: 1 hour full charge

Design

- Handle: Ergonomic grip & handling

Cutting system

- Cutter width: 32 mm
- Shaving element: Foil with two pre-trimmers
- Skin comfort: Skin comfort system, Comfort in sensitive areas

Ease of use

- Maintenance free: No oil needed

- Wet & Dry: Fully washable, Showerproof and easy cleaning
- Operation: Cordless use
- Secured length settings

Accessories

- Comb: 3 body combs (3, 5, 7 mm)
- Back handle attachment

Create the look you want

- Number of length settings: 3 fixed length settings

Service

- 2-year worldwide guarantee



Issue date 2023-03-03

Version: 1.2.1

© 2023 Koninklijke Philips N.V.
All Rights reserved.

Specifications are subject to change without notice.
Trademarks are the property of Koninklijke Philips N.V.
or their respective owners.

www.philips.com