



Philips Hairclipper series
7000
Hair clipper

Titanium Blades

24 length settings
120mins cordless use/1h charge
Adjustable beard comb and case



HC7450/80

HAIRCLIPPER Series 7000 - Cuts twice as fast*

with DualCut technology for a faster, sharper cut

The HAIRCLIPPER Series 7000 is built to last, and engineered to perform. The innovative cutting element, durable titanium blades and adjustable beard and hair combs are designed to give you a fast, sharp cut, time after time.

Easy to use

- 'Quick release' blades for easy cleaning
- 120 minutes of cordless use after a 1-hour charge

Performance

- Extra sharp blades for an extra sharp result
- Double-sharpened cutting element with reduced friction
- Turbo power button boosts cutting speed

Precise length control

- Easy to select and lock in 24 length settings: 0.5 to 23mm
- Includes a beard comb for 23 adjustable lengths: 1 to 23mm
- Includes scissors and a styling comb

Built to last

- 2yr guarantee plus 3yrs when you register the product online
- The blades never need oiling
- Hard case for reliable storage

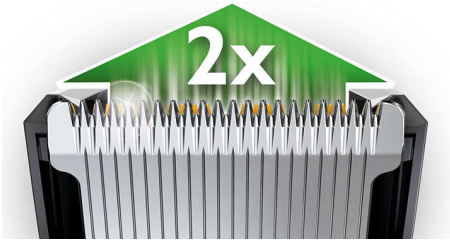
PHILIPS

Hair clipper
Titanium Blades 24 length settings, 120mins cordless use/1h charge, Adjustable beard comb and case

HC7450/80

Highlights

DualCut Technology



Power through any hair type with our advanced DualCut Technology, which combines a double-sharpened cutting element with low-friction engineering. The innovative cutting element is designed to perform time after time, cutting hair twice as fast as regular Philips clippers, with a robust stainless steel guard for ultimate durability.*

Titanium blades



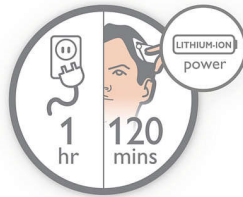
Get a perfect yet protective trim with self-sharpening titanium-coated steel blades created for long-lasting performance, time after time.

24 lock-in length settings



Turn the zoom wheel to simply select and lock in the length you want, with 23 length settings from 1 to 23mm, and precisely 1mm between each length. Or you can use it without the comb for a close 0.5mm trim.

Corded & powerful cordless use



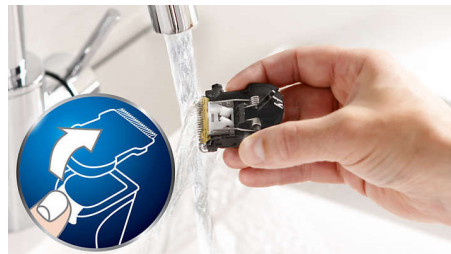
Use the clipper corded or cordless for maximum power and freedom. The powerful Lithium-Ion battery provides up to 120 minutes of cordless power after only 1 hour of charging.

Turbo boost



The turbo power button boosts cutting speed for a perfect cut even on the thickest hair.

Easy to clean



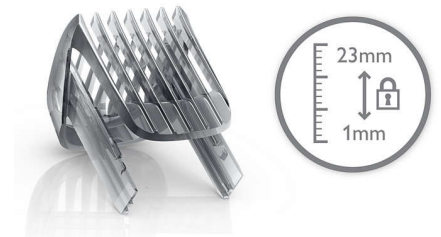
Simply click open the detachable head to quickly release and wash the blades.

5-year worldwide warranty



All of our grooming products are built to last. They come with a worldwide guarantee and worldwide voltage compatibility. Simply register your clipper on www.philips.com/ 5 years to receive an additional 3 years on top of your standard 2-year Philips guarantee, giving you a 5-year worldwide warranty in total.

Bonus adjustable beard comb



Turn the wheel to simply select and lock in the length you want, whether you have a beard or you want perfect stubble. Just attach the adjustable beard comb for 23 lock-in length settings from 1 to 23mm, with precisely 1mm between each length. Or you can use it without the comb for a close 0.5mm trim.

Hard storage case



Your clipper comes with a reliable hard case for complete durability, to ensure it is kept in optimum condition for ultimate power and precision, time after time.



Hair clipper

Titanium Blades 24 length settings, 120mins cordless use/1h charge, Adjustable beard comb and case

HC7450/80

Specifications

Cutting system

- Cutting element: Titanium blades
- Cutter width: 41 mm
- Number of length settings: 24
- Range of length settings: From 0.5 to 23 mm
- Precision (size of steps): By 1 mm
- Precision beard comb: 1-23mm adjustable beard comb

Accessories

- Barber tools: Styling comb & scissors

Ease of use

- Maintenance free: No oil needed
- Cleaning: Washable blades

Power system

- Charging time: 1 hour(s)
- Battery type: Lithium-Ion
- Operation: Corded and cordless
- Running time: Up to 120 minutes

Service

- 2-year guarantee: Yes, Plus 3-years with registration

Storage

- Case: Hard case



Issue date 2023-01-14

Version: 11.0.1

© 2023 Koninklijke Philips N.V.
All Rights reserved.

Specifications are subject to change without notice.
Trademarks are the property of Koninklijke Philips N.V.
or their respective owners.

www.philips.com

* Versus its Philips predecessor