

# PHILIPS



Washable hair  
clipper

Hairclipper series  
7000

Trim-n-Flow

28 length settings (0.5-28mm)

90 min cordless use/1h charge

100% washable



HC7650/14

## Fast, even, and precise haircut.

Personalized motor power, as you need

The Hair Clipper 7000 offers a precise, personalized haircut. With 28 length settings, a Power Adapt sensor, and Trim-and-flow Technology, it adjusts power to your hair density for a sharp, even finish.

### Easy to use

- 100% washable for easy, hassle-free cleaning
- 28 length settings with Precision dial
- Ergonomic Design with a Comfortable Grip
- Extra Beard Comb with Click-On Stubble Attachment

### Performance

- PowerAdapt sensor delivers a personalized haircut experience
- Trim-and-Flow Tech for a Hassle-Free Perfect Haircut
- Maximum precision with Philips DualCut system
- Remain as sharp as day one without oiling
- Turbo Mode for Extra Power and a Perfectly Even Cut

### Built to last

- Maintenance-Free Blades: No Oiling Needed, Ever
- Up to 5-Year Global Warranty for Purchase Protection

# Hairclipper series 7000

Washable hair clipper

HC7650/14

## Highlights

### PowerAdapt sensor



An even haircut, personalized to you. The PowerAdapt sensor automatically adjusts the motor to match your unique hair density, providing precisely the right cutting power at any length.

### 28 lock-in length settings



Cut your hair to the exact length you want with 2 adjustable combs that cut between 3mm and 28mm at 1mm increments, a 2mm stubble comb, or remove the comb for a close 0.5mm trim.

### Self-sharpening stainless steel blades



The self-sharpening steel blades are designed to be incredibly long-lasting. Even after 5 years they cut with the same precision and accuracy as day 1.

### Turbo mode



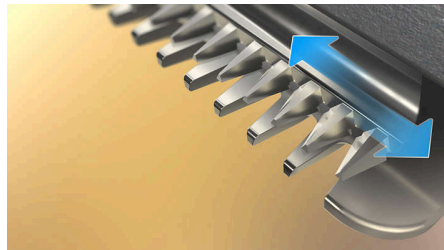
Stay tangle-free with our cordless hair clippers—just one hour of charging gives you up to 90 minutes of powerful clipping time. Alternatively, keep it plugged in for uninterrupted trimming.

### 100% washable



Keep your clipper clean effortlessly by rinsing it under the tap for quick and easy maintenance.

### DualCut Technology



Enjoy your desired look with precision. Philips DualCut technology features a double blade system designed to maintain day-one sharpness, consistently delivering equally sharp results every time.

### Comfortable grip



Philips clippers feature a textured grip for easy handling, ensuring you can cut your hair with control and comfort.

### Zero maintenance



Experience clipping power that's easy to maintain—Philips' blades never need oiling.

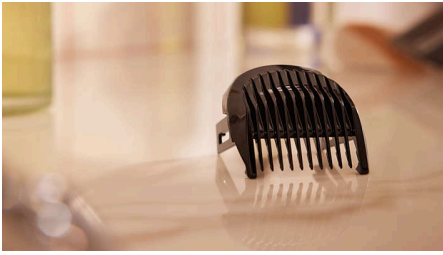
### Up to 2-year guarantee



A grooming product built to last: the warranty offers coverage for up to 5 years, including a 2-year standard global warranty, with an additional 3 years available upon registering the device within 90 days of purchase.

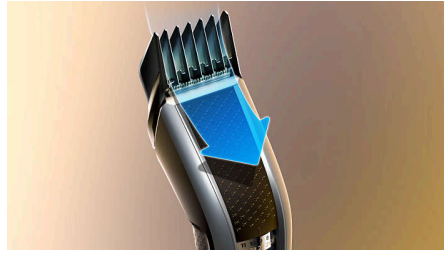
# Highlights

### Extra beard comb



It's all about the finishing touches. Trim your stubble or quickly touch up your hair with the additional 2mm beard comb included.

### Trim-and-Flow technology



Effortlessly achieve your perfect haircut. Our innovative comb is designed to prevent hair from getting stuck or tangled, ensuring a smooth cutting experience from start to finish.

# Hairclipper series 7000

Washable hair clipper

HC7650/14

## Specifications

### Power system

**Battery type:** Li-ion

### Accessories

**Maintenance:** Cleaning brush

**Comb:** 1 beard comb, 2 hair combs (long and short)

**Storage:** Soft pouch

### Service

**Up to 5-year guarantee**

### Cutting system

**Cutting element:** Stainless steel blades

**Cutter width:** 41 mm

**Number of length settings:** 28

**Range of length settings:** From 0.5 to 28 mm

**Precision (size of steps):** By 1 mm

### Ease of use

**Cleaning:** 100% washable

**Maintenance free:** No oil needed

**Operation:** Corded & Cordless use

