

PHILIPS

Hairdryer

2300W

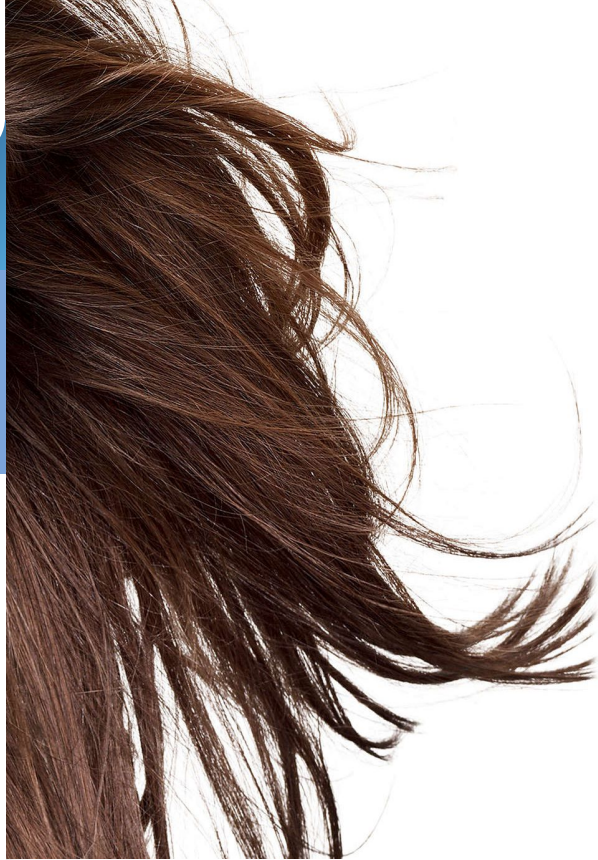
TempPrecision sensor

Ionic Care

6 speed/ temperature settings



HP8270/00



Healthier drying with innovative sensor

Drying your hair with care

The Philips ActiveCare hair dryer is equipped with the unique TempPrecision™ Sensor, that measures the hair temperature and automatically switches down the temperature, once the hair is dry. The healthy moisture stays within the hair.

Easy to use

- Six flexible speed and temperature settings for full control
- Avoid hair trapping with the removable filter

Beautifully styled hair

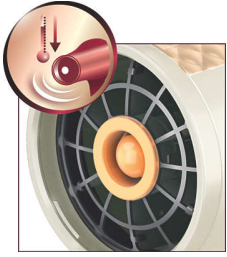
- Professional 2300W for great styling results
- Cool Shot sets your style
- Perfect styling results with a slim styling nozzle
- Volume diffuser enhances volume, for curls and bouncy styles

Less Hair Damage

- More Care with ceramic elements, providing far infrared heat
- More Care with ion conditioning for shiny, frizz-free hair
- 100% protection from overheated hair with TempPrecision

Highlights

Unique TempPrecision Sensor



The unique TempPrecision™ Sensor measures the temperature of the hair while drying and automatically switches down the temperature, once the hair is dry. The healthy moisture stays within the hair so the hair is kept in a healthy condition full of shine. The LED light on top of the dryer always indicates, when the sensor is switched on.

Ionic Care



Ionic conditioning enables anti-static drying. Charged negative ions eliminate static hair, condition the hair and smooth down the hair cuticles to intensify the hair's shine and glossiness. The result is smooth and frizz-free hair that shines beautifully.

More care with Ceramic element



The ceramic element issues far infrared heat, which has a gentle warmth that helps dry your hair from within and protects it from overdrying, without compromising on speed and effectiveness.

6 flexible speed/temp settings



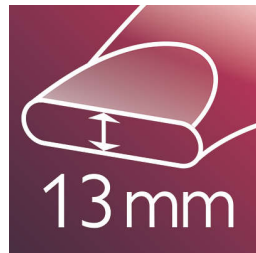
The speed and heat required can be easily adjusted to create the perfect style. Six different settings ensure full control for precise and tailored styling.

Volume diffuser



The volume diffuser dries hair healthily, reduces frizz and increases volume by spreading the airflow across the hair. It adds lift and maximises volume, especially when used on the crown and root area, making it perfect for creating curls and bouncy styles.

Slim styling nozzle



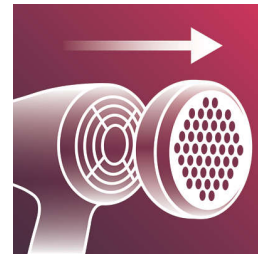
Perfect styling results and a shiny, polished look with a slim styling nozzle for precise styling.

Cool Shot



A must-have professional function for hair stylists. The Cool Shot button provides an intense burst of cold air. It is used after styling to finish and set the style.

Removable air filter



The filter of this hairdryer at the back of the dryer can be removed for cleaning. It also keeps hair from being trapped in the dryer. Remove and clean regularly to prevent build-up.

Professional 2300W



Professional 2300W for great styling results



Specifications

Technical specifications

Voltage: 220-240 V

Cord length: 2.5 m

Color/finishing: White and Gold

Wattage: 2300 W

Motor: DC

Features

Ceramic coating

Cool shot

Dual voltage: No

Ion conditioning

Hanging loop

Service

2-year guarantee

