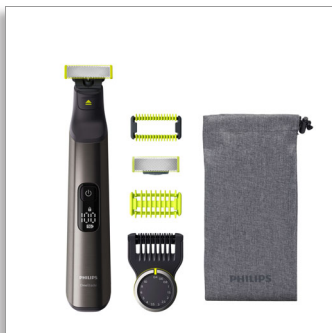




Philips OneBlade Pro
Face and Body

Rechargeable Li-Ion battery
14-length precision comb
Wet and Dry use
LED digital display



QP6550/30

Trim, edge and shave any length of hair

Designed to cut hair, not skin

Philips OneBlade Pro Face + Body trims, edges and shaves any length of hair. You get a blade for your face and one with a skin guard for your body. Forget about using multiple tools. OneBlade does it all.

Easy to use

- Each blade lasts 4 months
- Use wet or dry
- Charge up and go

Comfortable shave

- Unique OneBlade technology
- Shave it off
- Guards against nicks on sensitive areas
- Easily trim in any direction

Sharp edges

- Edge it up
- Create precise edges and sharp lines

Even trim

- Get the exact length you're after
- Trim it down

PHILIPS

Face and Body

Rechargeable Li-Ion battery 14-length precision comb, Wet and Dry use, LED digital display

QP6550/30

Highlights

Unique OneBlade technology



Designed for facial styling and body grooming, the Philips OneBlade trims, edges and shaves any length of hair. It delivers an easy and comfortable shave thanks to a glide coating and rounded tips. And with a cutter that moves at 200 x per second, it's efficient even on longer hairs.

Trim it down (Face + Body)

Trim your beard to an even length with the included adjustable precision comb. Dial up one of the 14 lock-in length settings to get everything from a 5 o'clock shadow, to a tight trim, to a longer beard style. Trim your body hair in any direction with the click-on body comb (3 mm).

Edge it up

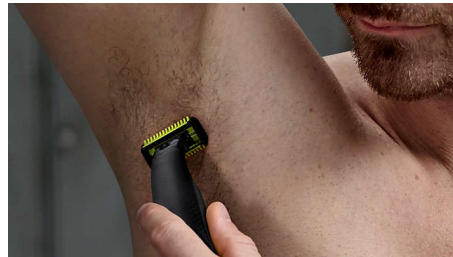


Get precise lines in seconds with the dual-sided blade that enables you to see every hair you're cutting.

Shave it off

The OneBlade shaver doesn't shave as close as a traditional blade, ensuring your skin stays comfortable. Go against the grain and shave off any length of hair easily.

Guard



Attach the skin guard for an extra layer of protection on sensitive areas of the body.

Click-on body comb



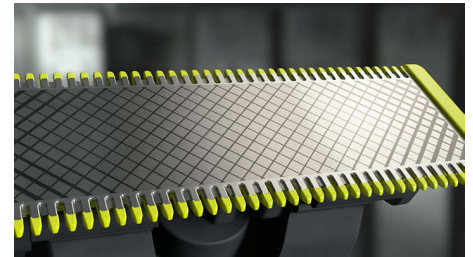
Simply attach the 3 mm body comb to trim in any direction.

14-length precision comb



A wet and dry shaver that allows you to trim to your preferred hair length with 14 different settings from 0.4 mm to 10 mm.

Dual-sided blade



OneBlade follows the contours of your face, allowing you to easily and comfortably trim and shave all areas. Use the dual-sided blade to style your edges and create clean lines by moving the blade in any direction.

Durable OneBlade



Easily replace your blade once every 4 months* for optimal performance. A green usage indicator will appear once the blade is worn out.

Face and Body

Rechargeable Li-Ion battery 14-length precision comb, Wet and Dry use, LED digital display

QP6550/30

Specifications

Trimming and shaving performance

- Shaving system: Contour-following technology, Dual protection system
- Trimming system: Contour-following technology

Ease of use

- Display: full LED digital display, Travel lock indicator
- Charging: Rechargeable
- Wet and dry use

Design

- Handle: Ergonomic grip and handling
- Colour: Chrome

Accessories

- Pouch: Soft pouch

- Comb: 14-length comb (0.4 - 10 mm), Click-on skin guard, Click-on body comb
- Extra replaceable blade

Power

- Charging: 1 hour full charge
- Battery type: Lithium-ion
- Automatic voltage: 100-240 V
- Run time: 120 minutes
- Max power consumption: 5.4 W

Service

- 2 year warranty: On the handle
- Replacement head: Replace every 4 months*, QP210, QP220, QP230, QP610, QP620



Issue date 2022-06-16

Version: 5.0.1

© 2022 Koninklijke Philips N.V.
All Rights reserved.

Specifications are subject to change without notice.
Trademarks are the property of Koninklijke Philips N.V.
or their respective owners.

www.philips.com

* For best shaving experience. Based on 2 full shaves per week. Actual results may vary.