

PHILIPS

Airstyler

1000W

Ceramic

4 attachments

HP4674/00



Everyday the frizz-free, shiny style you desire

Salon Airstylist Ion

Say hello to smooth shiny hair on a daily basis. The SalonAirstylist Ion 1000W combines ionic technology, four styling attachments and professional power to banish frizz forever

Easy to use

- 1.8 m power cord
- Three flexible settings for more control
- Swivel cord to prevent tangled wires
- Easy storage hook for convenient storage
- Ergonomic handle for ease of use

Beautifully styled hair

- Retractable bristle brush for easy curling
- Natural bristle brush for volume and extra shiny hair
- Narrow concentrator for focused airflow
- 38mm thermo brush to smoothen your hair
- 1000W for professional results

Less Hair Damage

- Cold air setting for gentle drying
- More Care with ion conditioning for shiny, frizz-free hair

Highlights

1000W



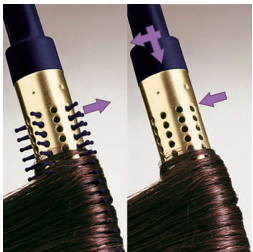
This airstyler has a 1000W heater that creates the optimum level of airflow and gentle drying power.

Ionic Care



Ionic conditioning enables anti-static drying. Charged negative ions eliminate static hair, condition the hair and smooth down the hair cuticles to intensify the hair's shine and glossiness. The result is smooth and frizz-free hair that shines beautifully.

Retractable bristle brush



This easy to use airstyler is both a styling brush and curler in one. The bristles retract into the brush at the touch of a button, so you can easily slide the styler out of your hair. What's left is a beautiful bouncy curl.

38mm thermo brush



The thermo brush has an extra wide diameter of 38mm. The width of the barrel makes it the perfect styling tool for creating smooth styles and waves.

Natural bristle brush



The natural hairs in this bristle brush gently smoothen the hair cuticles to give that extra shine to your hair.

Narrow concentrator



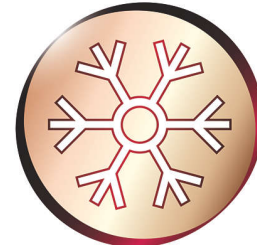
The concentrator works by focusing the flow of air through the opening onto specific areas. This results in precise styling and is great for touch-up or to finish a style.

Three flexible settings



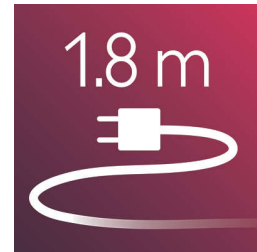
The speed and heat required can be easily adjusted to create the perfect end result. Three flexible settings ensure precise and tailored styling.

Cold air setting



A cold air setting is a low heat setting that gently dries the hair to minimize damage. This function is suitable for all hair types, but especially for fine, dry or damaged hair. It is a perfect setting for the hot summer season!

1.8 m cord



1.8 m power cord

Ergonomic handle

The handle is specially designed to fit well in the hand. Non slip, it has been tested by professionals for ergonomic handling and salon performance.



Specifications

Technical specifications

Color/finishing: dark blue and gold

Cord length: 1.8 m

Wattage: 1000 W

Features

Ceramic coating

Swivel cord

Hanging loop

Ion conditioning

Settings: 3 heat/speed settings

Hair type

End result: Multi-styles

Hair length: Medium, Long

Hair thickness: Thin, Medium, Thick

Attachments

Nozzle

Retractable bristle brush

Natural mixed bristle brush

Service

2-year guarantee

