

Philips Norelco
Bodygroom 7100
Wet and dry body
groomer, Series 7000

Safe, self-sharpening blades
5 built-in length settings
50 mins' cordless use/1 hr charge
3D pivoting head

BG2040/34

Fast and comfortable, below the neck

Closely follows your body's contours

A true all-in-one trimmer, the Philips Bodygroom 7100 is designed with an integrated trimmer on one end and a contour-following shaver head on the other, for a comfortable and convenient trim and shave.

Convenience: Provides optimal power

- Shows the battery status
- 50 minutes cordless use after 1 hour quick charge

Easy to use: Provides maximum ease of use

- Ergonomic rubber grip for maximum control
- Water-resistant for use in the shower and easy cleaning

Express yourself: Create the look you want

- 5 length settings for different body hair lengths
- for a close shave following your body's contours

Skin friendly: Best performance that feels great

- Trim and shave all body zones with optimal comfort
- Rounded tips for smooth contact with your skin
- Hypo-allergenic foil shaver and patented pearl tips

PHILIPS
 **NORELCO**

Highlights

Dual ended Design

Dual ended product for a more convenient experience: trimming head with 5 integrated length settings comb for different hair length options and a shaving head for a close shave.

Trimmer



Select and lock your desired length setting for convenient and skin friendly trimming of all body zones.

3D pivoting head



3-Dimensional pivoting head adjusts to every curve of your body for a close and comfortable shave.

Skin protection shaver



A hypo-allergenic metal shaving foil and patented pearl tip trimmer prevents skin irritation for ultimate body comfort.

Skin friendly trimmer



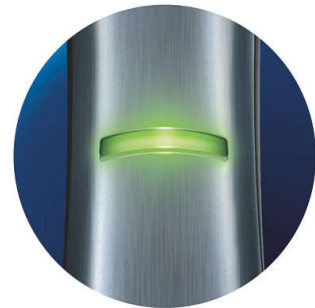
Rounded tips gives a smooth touch of your skin, while the sharp cutting edges deliver a high trimmer performance.

Quick charge



The battery delivers more than 50 minutes of powerful cordless after a 1 hour charge. A 10 min quick charge gives you 10 minutes of grooming time, so it is always ready when you are.

Battery light



Fully charged battery is indicated by a solid green light, with at least 10 minutes left of usage the light blinks orange.

Ergonomic grip



Striped rubber grips on each side ensure optimal grip, even when wet, for better control when grooming your body.

100% showerproof



Trim and shave in comfort, in or out of the shower, wet or dry. To clean, you can simply rinse this groomer under the tap.

Specifications

Trimming and shaving performance

- Skin comfort: Skin friendly shaving head
- Shaving system: Shaving foil for close shave
- 3D pivoting head: Body contour following
- Trimming system: 5 integrated length settings

Create the look you want

- Styles: Shave and trim your body

Power system

- Running time: 50 minutes
- Charging time: 1 hour
- Usage: Cordless only

Attachments

- XS trimming comb

FK-PC-Body groomers

- Ease of Use: Adjustable length setting, Battery Indicator, Secured length settings, Shower-proof

Accessories

- Store and charge stand

Design

- Finishing: Chromed body, LED Indicator
- All in 1 design: Dual heads, shaver and trimmer
- Easy grip: Soft-touch rubber grip

Service

- 2-year worldwide guarantee

Cutting system

- Cutter width: 32 mm
- Number of length settings: 5
- Shaving element: Foil with two pre-trimmers
- Trimming element: Integrated

Ease of use

- Cordless
- Wet and Dry: Showerproof and easy cleaning
- Secured length settings
- Charging indicator: 1 LED
- LED indicator: Charging and battery level
- Integrated trim and shave head: Close shave in one stroke

