

PHILIPS

Wet & Dry epilator

Satinelle Prestige

For legs, body and face

Ceramic discs grip fine hairs

4 body care routines

+ 8 accessories



BRE650/00



Our fastest epilation even on the finest of hairs 4 body care routines

Our fastest ever epilator has unique ceramic discs that rotate at a greater speed than ever before and firmly grip fine and short hairs. You can now smoothen your skin before and after epilating by treating all your different body areas.

Easy and effortless usage

- Cordless wet and dry for use in bath or shower
- Opti-light helps you target and remove even trickiest hairs
- First epilator with S-shaped handle
- Award-winning design*

Exceptional results

- Extra wide epilator head
- Epilation head of unique ceramic material for better grip

Personalized body and face care routines

- Body exfoliation brush removes dead skin cells
- Body massager to relax and for a radiant looking skin
- Facial area and delicate area cap to remove unwanted hairs
- Shaving head and trimming comb for a close shave
- Includes skin stretcher
- Includes massage cap

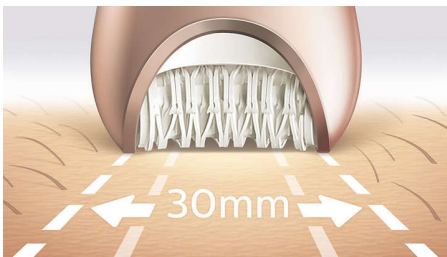
Highlights

Our fastest epilation ever



Our epilator head is unique in being made from a textured ceramic surface that gently extract even the finest hairs and those 4x shorter than wax. Now with faster disc rotation than ever before (2200RPM) for our fastest hair removal.

Extra wide epilator head



Extra wide epilator head covers more skin with every stroke for faster hair removal.

Award-winning design*



Award-winning design* for effortless hair removal

Cordless wet and dry usage



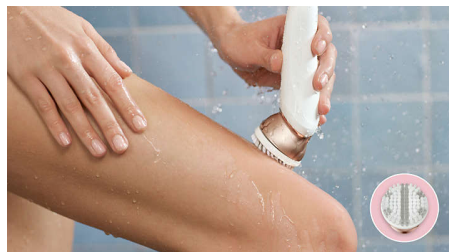
Designed with an anti-slip grip, ideal for use with water. Enables a more comfortable, gentle experience in your shower or bath. You can use it cordless for best convenience.

Opti-Light



Opti-light helps you target and remove even trickiest hairs

Body exfoliation brush



Our body exfoliation brush removes dead skin cells and helps to prevent ingrown hairs. The 48,200 hypo-allergenic, fine bristles gently yet effectively sweep away dead skin cells and stimulate the regeneration of the skin surface. This device will exfoliate your skin more effectively than manual treatment alone.

Body massager



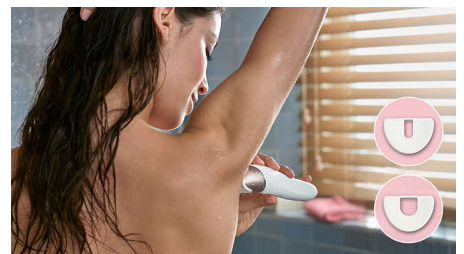
Our body massager gives you a relaxing treatment so you can enjoy radiant-looking skin.

Shaving head and trimming comb



The shaving head provides a close shave and more gentleness in different body areas. It comes with a trimming comb to style your bikini area.

Facial and delicate area cap



For more gentleness in all different body areas it includes a facial area cap to easily remove unwanted facial hairs and a delicate area cap for hair from underarm and bikini

Massage cap



Massage cap eases the epilation sensation.

Specifications

Accessories

Pouch: Basic pouch
Body Exfoliation Brush
Cleaning brush
Shaving head
Body Massager
Trimming comb
Facial area cap
Delicate area cap
Massage cap
Skin stretcher cap

Power

Battery Type: Lithium-ion
Charging: Rechargeable, 1.5 hour charging time
Quick charge
Usage time: up to 40 minutes

Technical specifications

Number of catching points: 32
Number of discs: 17
Voltage: 15V / 5.4W
Tweezing action speed 2: 70400 per minute
Tweezing action speed 1: 64000 per minute

Features

Speed settings: 2 settings

Ease of use

Cordless
Handle: Ergonomic
Wet and dry use
Opti-light

Performance

Epilation discs: Ceramic discs
Epilation system: Patented epilation system
Epilator head: 30 mm, Extra wide

