

Philips Shaver series 7000,
5000

Replacement electric
shaver heads

SteelPrecision blades

Fits all S7000

Fits angular-shaped S5000

Not compatible w/ older S5000

SH71/50



Reset your shaver to new

Change heads every 2 years for 100% performance

Within two years, your shaver heads cut 9 million hairs on your face. Replace the shaver heads and get back to 100% performance.

A close shave

- Powerful performance in every pass

Easy to use

- Replace the shaver heads and get back to 100% performance
- Reset your shaver very simply

Compatibility

- Compatible with all S7xxx and angular-shaped S5xxx

PHILIPS

Replacement electric shaver heads
SteelPrecision blades Fits all S7000, Fits angular-shaped S5000, Not compatible w/ older S5000

Specifications

Shaving heads

- Fits product type: All Shaver series 7000, Angular-shaped Series 5000
- Shaving heads per packaging: 3

SH71/50

Highlights

Compatible with S7000, S5000



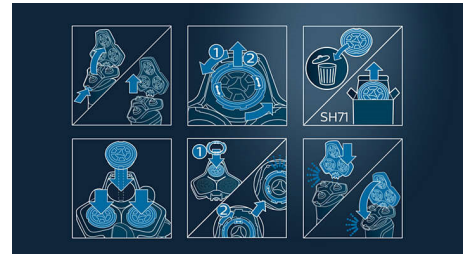
SH71 replacement heads are compatible with all Shavers Series 7000 (S7xxx) and angular-shaped Series 5000 (S5xxx). They are not compatible with the rounded Series 5000, which use SH50 replacement heads instead.

SteelPrecision blades



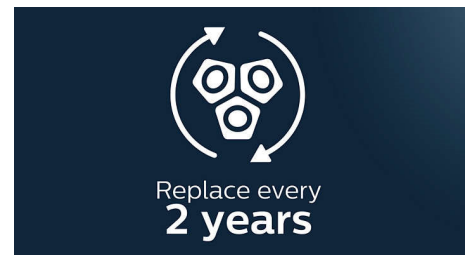
With up to 90,000 cutting actions per minute, the SteelPrecision blades shave close, cutting more hair per stroke*. The 45 high-performance blades are self-sharpening and made in Europe.

Simple replacement



1. Press the release buttons and detach the shaving head holder.
2. Turn the retaining rings counter-clockwise and remove them.
3. Remove old shaving heads and insert replacement (notches should fit exactly onto the projections).
4. Place retaining rings back and turn them clockwise until you hear a click.
5. Insert the shaving holder back and close.

Reset your shaver to new



Replace the shaver heads and get back to 100% performance.



Issue date 2023-03-31

Version: 5.0.2

EAN: 87 10103 94411 9

© 2023 Koninklijke Philips N.V.
All Rights reserved.

Specifications are subject to change without notice.
Trademarks are the property of Koninklijke Philips N.V.
or their respective owners.

www.philips.com

* Tested versus Philips Series 3000.