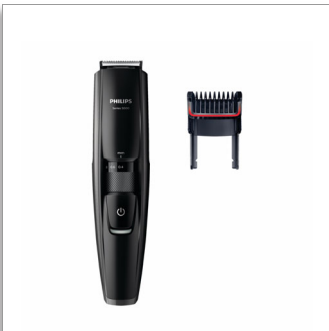




Philips Beardtrimmer
series 5000
Stubble trimmer

0.2 mm precision settings

Full metal blades
60 min cordless use/1 hr charge
Integrated hair lift comb



BT5200/15

Effortless even trim

Dynamic beard guide system for an even result

This trimmer with full metal blades lets you achieve exactly the 3-day stubble, short beard or long beard look you want. Our new integrated hair lift comb raises hairs for efficient one-pass, even trimming results

Easy to use

- 17 Lock-in length settings, 0.4–10 mm with 0.2 mm precision
- 60 minutes runtime after a 1 hour charge, or plug it in
- Easy but thorough cleaning
- 2-year guarantee, worldwide voltage and no need to oil

Skin-friendly performance

- Skin-friendly, high-performance blades for the perfect trim

Effortless trimming

- Lifts the hair up to the level of the blade for even results
- Guides the hairs to the cutter for effortless trimming
- Blades are sharpened twice for faster trimming*

Perfect 3-day stubble

- Keep perfect 3 day stubble by using the 0.4 mm setting daily

PHILIPS

Stubble trimmer

0.2 mm precision settings Full metal blades, 60 min cordless use/1 hr charge, Integrated hair lift comb

BT5200/15

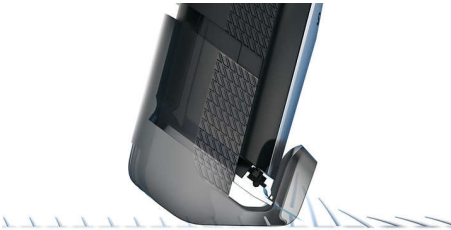
Highlights

Dynamic Beard Guide System



The Dynamic Beard Guide system with the help of the integrated hair lift comb lifts the hairs up to the level of the blades for even trimming results and lets you achieve exactly the 3 day stubble, short beard or long beard look you want.

Integrated Hair lift comb



Trim your stubble in one quick pass, while being gentle on your skin. Our new Integrated hair lift comb lifts and guides the hairs to the level of the blades for effortless, even trimming.

Full metal blades



This trimmer comes with twice-sharpened full metal blades that cut more hairs in every pass for faster trimming.

17 lock-in length settings



Select your preferred trim length by simply turning the zoom wheel on the handle until the length you want is displayed from 0.4–10 mm with 0.2 mm precision. Your chosen length is now "locked in" for a perfectly even trim.

Corded and cordless use



60 minutes

Charge your beard trimmer for 1 hour to get 60 minutes of cordless use. If you need more energy while trimming, you can simply plug the trimmer into the wall. This trimmer has been designed to work both cordlessly and while plugged in.

100% waterproof



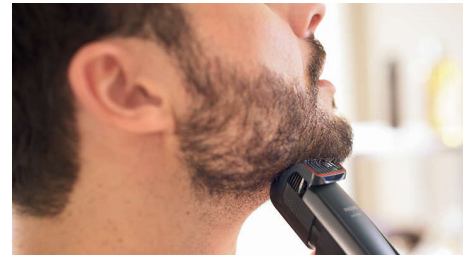
The 100% waterproof beard trimmer, simply rinse it under the tap for a thorough, easy clean.

Skin-friendly blades



Get a perfect yet protective trim, time after time. The beard trimmer's steel blades lightly brush against one another, sharpening themselves as they trim so they stay extra sharp and effective. They also have rounded tips and combs to help prevent skin irritation.

Ideal stubble setting



Keep an ideal 3 day stubble, day after day, by using the trimmer's shortest 0.4 mm setting.

Built to last



We back this Philips trimmer with a 2 year guarantee: our grooming products are built to last. You'll never need to oil it, and it's compatible with all worldwide voltages.

Stubble trimmer

0.2 mm precision settings Full metal blades, 60 min cordless use/1 hr charge, Integrated hair lift comb

BT5200/15

Specifications

Create the look you want

- Number of length settings: 17 integrated length settings

Cutting system

- Cutting element: Stainless steel blades
- Precision (size of steps): From 0.2 mm
- Non-scratch teeth: For more comfort

Design

- Colour: Black

Ease of use

- Display: Battery light

Accessories

- Comb: Integrated hair lift comb
- Maintenance: Cleaning brush

Ease of use

- Cleaning: Fully washable
- Operation: Corded and Cordless use

Service

- 2 year guarantee

Ease of use

- Zoom wheel: Easily adjust length settings

Power

- Automatic voltage: 100-240 V

Service

- No oil needed

Power

- Run time: 60 minutes
- Charging: 1 hour full charge



Issue date 2022-06-02

Version: 5.3.1

© 2022 Koninklijke Philips N.V.
All Rights reserved.

Specifications are subject to change without notice.
Trademarks are the property of Koninklijke Philips N.V.
or their respective owners.

www.philips.com

* Versus its Philips predecessor