

Philips SalonStraight
Seduce
Straightener

210°C
Ceramic
Straight and Curl

HP4668/00



Free your inner stylist

SalonStraight Seduce

Turn heads with your style. The SalonStraight Seduce features ceramic plates, adjustable digital settings and a professional top temperature of 210°C, letting you create good-looking straight, wavy or curly styles.

Ease of use

- Swivel cord to prevent tangled wires
- Dual voltage for worldwide use
- Automatic shut-off after 60 min
- Ready-to-use indicator
- Easy storage hook for convenient storage
- 1.8 m power cord

Beautifully styled hair

- Digital heat settings to ensure super smooth results for every hair type
- Ceramic plates for smooth gliding and shiny hair
- Rounded edges for perfect curls and beautiful waves
- 210°C professional high heat for perfect salon results

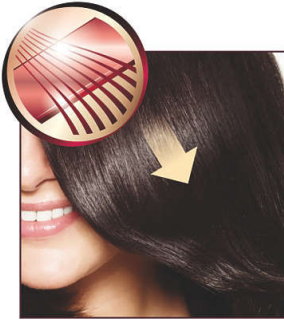
Less hair damage

- EHD+ technology for more protection and shinier results

PHILIPS

Highlights

Ceramic plates



Ceramic is microscopically smooth and durable by nature, and is therefore one of the best materials for straightening plates. The plates glide effortlessly through your hair, giving you perfect shiny hair.

Digital heat settings

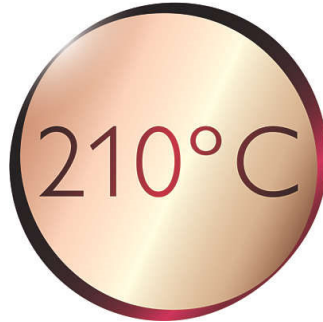


Digital heat settings make it easy to quickly choose the function you need or adjust the styling temperature using the digital display. This enables you to select the perfect temperature for your specific hair and needs. The result is perfect styling at the touch of a button.

Rounded edges

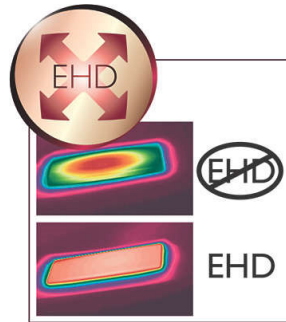
Ceramic plates with gentle rounded edges make creating flicks and curls easier than ever. Wrap the hair around the rounded edge, and simply pull the straightener down as you normally do.

210°C professional temperature



This high temperature enables you change the shape of your hair, and gives you that perfect look, as if you've just come from the salon.

EHD+ technology



Advanced Philips EHD+ technology means that your styler will always distribute the heat very evenly - even at high temperatures, and prevents damaging hot spots. This gives added protection and thus helps to keep your hair healthy and shiny.

Easy storage hook



The rubberised hook is located at the base of the handle and provides another storage

option, particularly convenient for use in the home or when staying at a hotel.

Swivel cord



Useful swivel cord technology rotates the cord to prevent tangled wires.

Dual voltage



Dual voltage for worldwide use

Ready-to-use indicator



This shows when the styler has reached the right temperature, so you can instantly see when you're ready to style.

Specifications

Technical specifications

- Voltage: 110-240 V
- Cord length: 1.8 m
- Power: 45-65 W

Hair type

- Current hair style: Straight, Wavy, Curly

- End result: Straight, Wavy
- Hair length: Long, Medium
- Hair thickness: Thin, Thick
- For fragile hair

Serviceability

- Replacement



Issue date 2022-06-02

Version: 6.1.1

© 2022 Koninklijke Philips N.V.
All Rights reserved.

Specifications are subject to change without notice.
Trademarks are the property of Koninklijke Philips N.V.
or their respective owners.

www.philips.com