

PHILIPS

KeraShine
straightener

Advanced

SilkPro Care

ThermoProtect technology

Keratin-infused plates

Ionic care

BHS378/10



Shiny smooth hair with precise control & KeraShine

With precise control and KeraShine protection, this advanced straightener is specially designed for easy and fast styling, thanks to the 6 LED temperature settings and the long Keratin-infused plates..

Ease of use

- 6 LED temperature settings for precise control
- Auto shut-off for safe usage
- Key-lock function for safe and easy storage
- Universal voltage for worldwide use
- 100mm long plates for fast and easy straightening
- Fast heat-up time, ready to use in 30 sec

Beautifully styled hair

- Temperature range from 160°C up to 230°C
- Silky smooth plates and less heat exposure

Care for your hair

- ThermoProtect technology
- Ionic care for shiny, frizz-free hair
- Keratin ceramic plates for smooth gliding and shiny hair

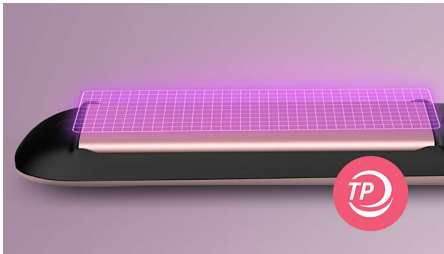
Highlights

SilkPro Care



Enjoy style and care with the Philips SilkPro Care technology. Plates smoother than silk glide through your hair with optimized temperature, minimizing friction and resulting in less heat exposure. For beautifully straightened silky smooth hair.

ThermoProtect technology



ThermoProtect technology distributes heat evenly across the plates, preventing overheating to protect your hair.

Keratin ceramic plates



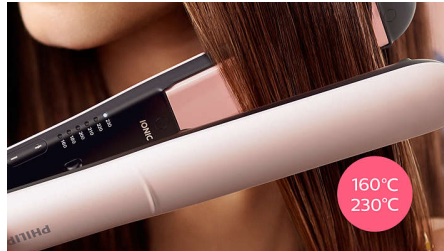
Keratin-infused ceramic plates glide smoothly through your hair, for quick and easy styling.

Ionic care



Charged negative ions eliminate static, condition the hair and smooth down the hair cuticles to intensify the hair's shine and glossiness. The result is smooth, frizz-free hair with vibrant shine.

Temperature range



Choose between temperature range from 160°C up to 230°C to secure long-lasting result while minimizing risk of hair damage.

6 LED temperature settings



Variable settings from 160°C–230°C with clear LED indication for precise control. Lower temperatures for last minute touch ups and gentle styling. Higher temperatures for long lasting results. Enjoy precise styling for protected hair.

100mm long plates



The longer 100mm plates enable better contact with the hair to help you achieve perfect straightening results easier and in less time.

Fast heat-up time



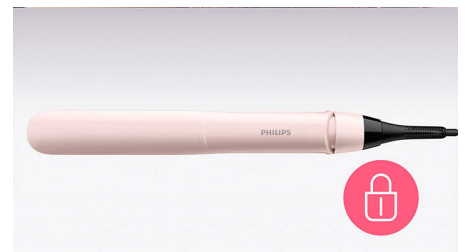
The straightener has a fast heat-up time, being ready to use in 30 seconds.

Auto shut-off



The styler has an automatic shut-off function for safe usage. It automatically switches off after 60 minutes.

Key-lock function



The plates can be locked together for safe and easy storage.

Specifications

Technical specifications

Voltage: 110-240 V

Cord length: 1.8 m

Heat-up time: 30 sec

Type of temperature control: Slider with LED indicator

Long plates: 28X100mm

Styling temperature: 160°C - 230°C

Features

Swivel cord

Ready to use light

Material plates: Keratin-infused ceramic plates

Storage hook

Plate lock

Service

2-year worldwide warranty

