

Philips
Hairdryer

2200 W

HP8183/07

SalonDry Control

Easy to use

- Removable air inlet grill for easy cleaning
- 1.8 m power cord
- Easy storage hook for convenient storage

Beautifully styled hair

- Narrow concentrator for focused airflow
- Six flexible speed and temperature settings for full control
- Volume diffuser enhances volume, for curls and bouncy styles
- Professional 2200 W for perfect salon results
- Cool Shot sets your style

Less Hair Damage

- Ceramic element to smooth your hair
- 4 x stronger Ion conditioning for ultimate shine

PHILIPS

Highlights

Professional 2200 W



This 2200 W professional hairdryer creates a powerful airflow. The resulting combination of power and speed makes drying and styling your hair quicker and easier.

4 x more ion conditioning



Give your hair an intensive boost with ionic conditioning. This hairdryer emits 4 x more negatively charged ions than other hairdryers. This ultimate stream of ions eliminates more static, conditions the hair and smoothes down the hair cuticles. The result is ultimate shiny and frizz-free hair. Let it shine!

Six flexible speed and temperature settings



The speed and heat required can be easily adjusted to create the perfect style. Six

different settings ensure full control for precise and tailored styling.

Ceramic element



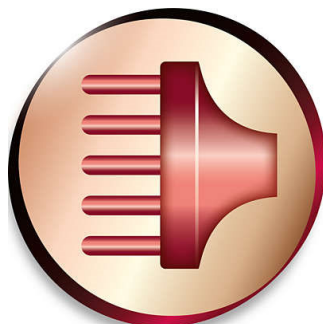
The ceramic element prevents overdrying. It issues infrared heat, which has a gentle warmth which helps dries your hair from within and protects it from overdrying, without compromising on speed and effectiveness.

Cool Shot



A must-have professional function for hair stylers. The Cool Shot button provides an intense burst of cold air. It is used after styling to finish and set the style.

Volume diffuser



The volume diffuser dries hair healthily, reduces frizz and increases volume by

spreading the airflow across the hair. It adds lift and maximises volume, especially when used on the crown and root area, making it perfect for creating curls and bouncy styles

Narrow concentrator



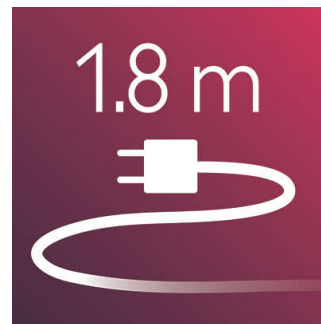
The concentrator of the hair dryer works by focusing the flow of air through the opening onto specific areas. This results in precise styling and is great for touch-ups or to finish a hair style.

Easy storage hook



The rubberised hook is located at the base of the handle and provides another storage option, particularly convenient for use in the home or when staying at a hotel.

1.8 m cord



1.8 m power cord

Specifications

Technical specifications

- Cord length: 1.8 m
- Power: 2200 W
- Wattage: 2200 W

Features

- Cool shot

- Hanging loop
- Ion conditioning

Service

- 2 year guarantee



Issue date 2022-06-10

Version: 3.0.1

© 2022 Koninklijke Philips N.V.
All Rights reserved.

Specifications are subject to change without notice.
Trademarks are the property of Koninklijke Philips N.V.
or their respective owners.

www.philips.com