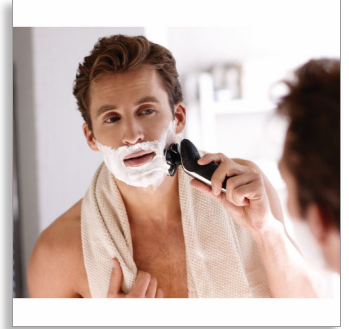




Philips
Shaving unit

Discontinued
Buy SH70 instead



RQ12/70



Reset your shaver to new

Change heads every 2 years for the best results

Within two years your shaver heads cut 9 million hairs on your face. Replace the shaver heads and get back to 100% performance.

Easy to use

- Reset your shaver after replacing shaving heads
- Easy to replace shaving heads
- Reset your shaver to new

Compatibility

- Replacement shaving unit for SensoTouch 3D shavers

Perfection in every pass

- Our best shaving system on 1–3-day beards
- Heads flex in 8 different directions for a superb result

PHILIPS

Shaving unit
Discontinued Buy SH70 instead

Highlights

Compatible with SensoTouch 3D



RQ12 shaving unit is compatible with SensoTouch 3D (RQ12xx) and Arcitec (RQ10xx) shavers.

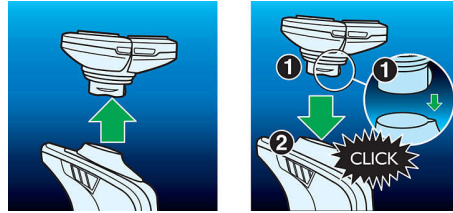
V-Track blade system PRO

Get the perfect close shave. The V-Track Precision PRO Blades gently position each hair in the best cutting position, from 1-day to 3-day beards, including flat-lying hairs and hairs of different lengths. Cuts 30% closer* in fewer strokes, leaving your skin in great condition.

8 direction ContourDetect Heads

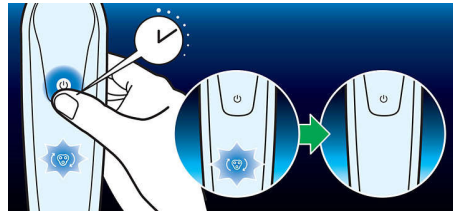
Follow every contour of your face and neck with 8 directional ContourDetect heads. You'll catch 20% more hairs with every pass, resulting in an extremely close, smooth shave.

Simple replacement



Easily renew your shaving unit using our click off, click on system.

How to reset your shaver



The latest Philips shavers have an inbuilt replacement reminder, which will tell you when to replace the shaving heads. After replacing the shaving heads, you can reset the replacement trigger by pressing the on/off button for more than 5 seconds. Otherwise, the replacement trigger will be turned off automatically after 9 successive shaves.

Reset your shaver to new



To get back to 100% performance, replace your shaving heads every 2 years.

RQ12/70

Specifications

Shaving heads

- Fits product type: SensoTouch 3D (RQ12xx), arcitec (RQ10xx)
- Upgraded shaving heads: RQ12 has been replaced by SH70
- Important: If SH70 is also out of stock, unfortunately, there is no replacement available. SH71 is not compatible with SensoTouch or arcitec shavers.



Issue date 2022-06-02

Version: 10.2.1

© 2022 Koninklijke Philips N.V.
All Rights reserved.

Specifications are subject to change without notice.
Trademarks are the property of Koninklijke Philips N.V.
or their respective owners.

www.philips.com