

# PHILIPS

## Hairdryer

2100 W

IonBoost

Ceramic diffuser

HP4891/27



## Professional shiny results

### SalonPro

Want to dry your hair like the professionals? The SalonPro – with 2100 W of superior drying power – is the hairdryer you need if you're looking to recreate that salon style blow dry.

#### Beautifully styled hair

- Volume diffuser enhances volume, for curls and bouncy styles
- Digital heat settings to ensure super smooth results for every hair type
- Professional 2000 W for perfect salon results
- Nine flexible speed and temperature settings for maximum control
- Ultra narrow concentrator for precise styling
- Ceramic Nano-Diamond plates for extra smooth gliding and shiny results

#### Less Hair Damage

- Ceramic element to smooth your hair
- Ion conditioning for shiny, frizz-free hair
- EHD+ technology for more protection and shinier results

#### Long-lasting styles

- Cool Shot sets your style

# Highlights

## Professional 2000 W



This 2000 W professional hairdryer creates a powerful airflow. The resulting combination of power and speed makes drying and styling your hair quicker and easier.

## Digital heat settings



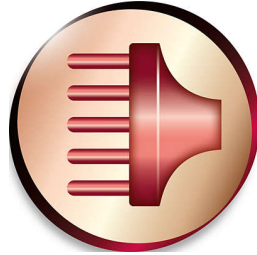
Digital heat settings make it easy to quickly choose the function you need or adjust the styling temperature using the digital display. This enables you to select the perfect temperature for your specific hair and needs. The result is perfect styling at the touch of a button.

## Nine flexible speed and temperature settings



The speed and heat required can be easily adjusted to create the perfect end result. Nine different settings ensure maximum control for precise and tailored styling.

## Volume diffuser



The volume diffuser dries hair healthily, reduces frizz and increases volume by spreading the airflow across the hair. It adds lift and maximises volume, especially when used on the crown and root area, making it perfect for creating curls and bouncy styles

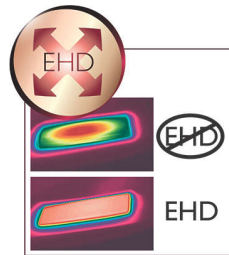
## Ultra narrow concentrator 15 mm

The concentrator works by directing the flow of air through the ultra-narrow opening on to specific areas. This results in very precise styling and is great for adjusting or finishing a style.

## Ceramic Nano-Diamond plates

Besides being a girl's best friend, diamonds are also physically known as the hardest surface possible. This knowledge has been used to optimise our Ceramic straightening plates. These advanced Ceramic Nano-Diamond straightening plates offer optimal heat transfer and a super smooth, scratch resistant surface for extra smooth gliding and beautiful shiny results.

## EHD+ technology



Advanced Philips EHD+ technology means that your styler will always distribute the heat very evenly - even at high temperatures, and

prevents damaging hot spots. This gives added protection and thus helps to keep your hair healthy and shiny.

## Ceramic element



The ceramic element prevents overdrying. It issues infrared heat, which has a gentle warmth which helps dries your hair from within and protects it from overdrying, without compromising on speed and effectiveness.

## Ion conditioning



Give your hair an instant boost with ionic conditioning. Charged negative ions eliminate static, condition the hair and smooth down the hair cuticles to intensify the hair's shine and glossiness. The result is hair that is beautifully shiny, smooth and frizz-free.

## Cool Shot



A must-have professional function for hair styler. The Cool Shot button provides an intense burst of cold air. It is used after styling to finish and set the style.

# Specifications

## Technical specifications

Cord length: 3 m

Wattage: 2000 W

## Serviceability

Replacement

