

PHILIPS

Hairdryer

TRESemmé

HP8251



The expert's secret weapon

SalonDry Pro 2300

New and improved, 20% lighter, 30% more airflow

Easy to use

- Ergonomic handle for ease of use
- Removable air inlet grill for easy cleaning
- Included: Brush for smooth hair
- Easy storage hook for convenient storage

Beautifully styled hair

- Professional 2300 W for great styling results
- 6 flexible speed and temperature settings
- Volume diffuser enhances volume, for curls and bouncy styles
- Narrow concentrator for focused airflow
- Cool Shot sets your style

Less Hair Damage

- Ceramic element to smooth your hair
- Ion conditioning for shiny, frizz-free hair

Highlights

Ion conditioning



Ion conditioning for shiny, frizz-free hair

6 flexible settings



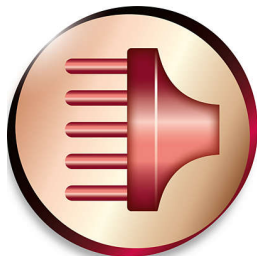
6 flexible speed and temperature settings

Ceramic element



The ceramic element prevents overdrying. It issues infrared heat, which has a gentle warmth which helps dries your hair from within and protects it from overdrying, without compromising on speed and effectiveness.

Volume diffuser



The volume diffuser dries hair healthily, reduces frizz and increases volume by spreading the airflow across the hair. It adds lift and maximises volume, especially when used on the crown and root area, making it perfect for creating curls and bouncy styles

Easy storage hook



The rubberised hook is located at the base of the handle and provides another storage option, particularly convenient for use in the home or when staying at a hotel.

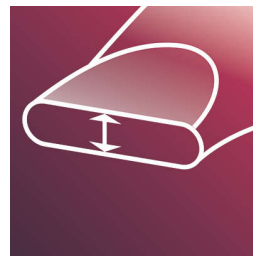
Removable air inlet grill

The air inlet grill of this hairdryer can be removed for cleaning. Remove and clean regularly to prevent build-up.

Included: Brush

Use this high-quality brush to detangle and smooth the hair cuticles to give that extra shine to your hair.

Narrow concentrator



The concentrator works by focusing the flow of air through the opening onto specific areas. This results in precise styling and is great for touch-ups or to finish a style.

Ergonomic handle

Ergonomic handle for ease of use

Cool Shot



A must-have professional function for hair stylists. The Cool Shot button provides an intense burst of cold air. It is used after styling to finish and set the style.

Professional 2300 W



Professional 2300 W for great styling results

Specifications

Technical specifications

Cord length: 2.5 m

Wattage: 2300 W

Features

Ceramic coating

Cool shot

Dual voltage

Ion conditioning

Hanging loop

Service

2 year guarantee

