

Philips Shaver series 9000  
and SP9000  
Replacement shaving heads

**Precision blades\***

Fits S9000 (S9xxx)

Fits S9000 Prestige (SP98xx)

**SH91/50**



## Reset your shaver to new

Change heads every 2 years for 100% performance

Within two years, your shaver heads cut 9 million hairs on your face. Replace the shaver heads and get back to 100% performance.

**Easy to use**

- Reset your shaver very simply
- Replace the shaver heads and get back to 100% performance

**Compatibility**

- Compatible with S9000 and S9000 Prestige

**Powerful shaver, gentle on skin**

- Advanced precision for a closer shave\*

**PHILIPS**

Replacement shaving heads  
Precision blades\* Fits S9000 (S9xxx), Fits S9000 Prestige (SP98xx)

# Specifications

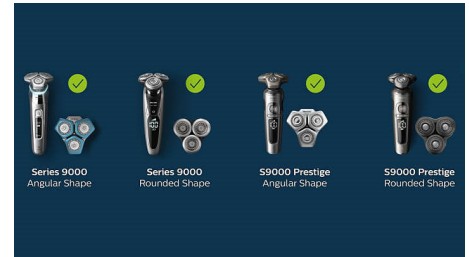
## Shaving heads

- Fits product type: Shaver series 9000 (S9xxx), and S9000 Prestige (SP98xx)
- Shaving heads per packaging: 3

SH91/50

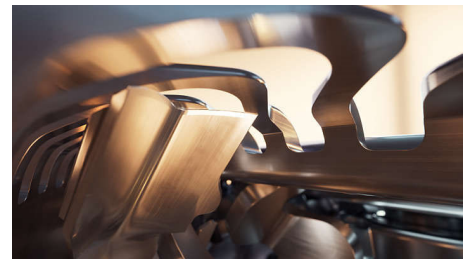
# Highlights

## Compatible with S9000



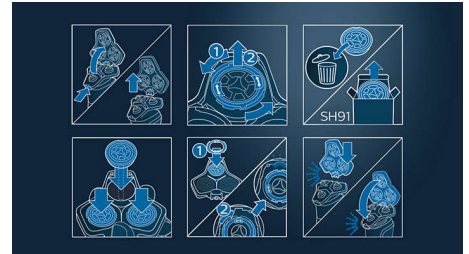
SH91 replacement heads are compatible with all Shavers Series 9000 (S9xxx) and S9000 Prestige (SP98xx).

## Precision blades\*



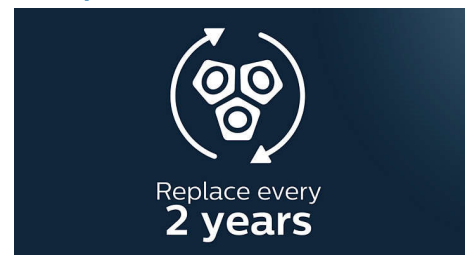
With up to 150,000 cutting actions per minute, the Precision blades\* deliver a close shave. The 72 high-performance self-sharpening blades are made in Europe.

## Simple replacement



1. Press the release buttons and detach the shaving head holder.
2. Turn the retaining rings counter clockwise and remove them.
3. Remove old shaving heads and insert replacement (notches should fit exactly onto the projections).
4. Place retaining rings back and turn them clockwise until you hear a click.
5. Insert the shaving holder back and close.

## Reset your shaver to new



Replace the shaver heads and get back to 100% performance.



Issue date 2023-03-30

Version: 8.8.1

© 2023 Koninklijke Philips N.V.  
All Rights reserved.

Specifications are subject to change without notice.  
Trademarks are the property of Koninklijke Philips N.V.  
or their respective owners.

[www.philips.com](http://www.philips.com)

\* versus predecessor Philips Series S9000