

PHILIPS

Straightener

SalonStraight Initial

HP4643



Create the straight style you want

SalonStraight Initial

Want to create straight looks that last? The SalonStraight Ceramic heats to a professional styling temperature of 200°C and features Ceramic plates for beautifully shiny, salon-straight results every time.

Ease of use

- Swivel cord to prevent tangled wires
- On/off indication light
- Easy storage hook for convenient storage
- 1.8 m power cord

Beautifully styled hair

- Ceramic plates for smooth gliding and shiny hair
- Integrated guiding comb for perfect results

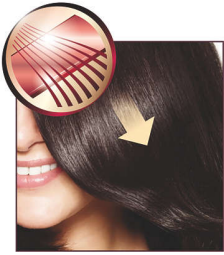
Time saving

- Instant heat: ready to use within 30 seconds

Highlights

Specifications

Ceramic plates



Ceramic is microscopically smooth and durable by nature, and is therefore one of the best materials for straightening plates. The plates glide effortlessly through your hair, giving you perfect shiny hair.

Guiding comb

The integrated teeth ensure that the hair is evenly distributed across the straightening plates.

Instant heat

No more waiting around for your styler to heat up; this allows you to switch on and get styling.

Easy storage hook



The rubberised hook is located at the base of the handle and provides another storage option, particularly convenient for use in the home or when staying at a hotel.

Swivel cord



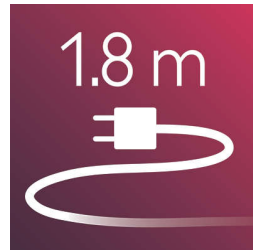
Useful swivel cord technology rotates the cord to prevent tangled wires.

On/off indication light



On/off indication light

1.8 m cord



1.8 m power cord

Technical specifications

Voltage: 220-240- V

