



Philips Beardtrimmer  
series 3000  
beard and stubble trimmer

0.5-mm precision settings  
Stainless steel blades  
45 mins cordless use/10 hr charge



QT4005/13

## The perfect beard made easy

The most convenient way to start with your beard

Style your beard the way you want with this beard trimmer. Precision from as short as 0.5 mm up to 10 mm.

### Easy to use

- Up to 45 minutes of cordless use after 10 hours' charging
- Easy to grip
- Simple maintenance
- Warranty for purchase protection

### Skin-friendly performance

- Skin friendly rounded tips for smooth skin contact
- Get a perfect but protective trim

### Precision

- 0.5 mm precision
- Easy to select and lock in length settings, 0.5 mm to 10 mm

# PHILIPS

beard and stubble trimmer  
0.5-mm precision settings Stainless steel blades, 45 mins cordless use/10 hr charge

QT4005/13

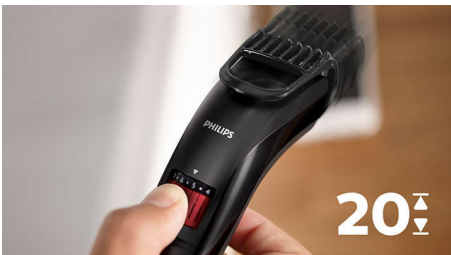
# Highlights

## Perfect 3-day beard every day



Set the trimmer at the lowest position for perfect stubble, just 0.5mm long.

## 20 lock-in length settings



Turn the wheel to simply select and lock in the length settings you want: from a 3 day beard of 0.5 mm up to a full beard of 10 mm, in precise 0.5 mm steps.

## Self-sharpening blades



The self-sharpening steel blades on the Philips 3000 beard trimmer stay as sharp and effective as on day 1 to deliver a perfect yet protective trim, time after time.

## Skin-friendly high-performance



Blades stay extra-sharp to always cut hairs neatly and effectively, but have rounded blade tips and combs to prevent irritation.

## Cordless Use



Rechargeable only. Up to 45 minutes of cordless power after 10 hours of charging.

## Ergonomic design



A fast trimmer that's comfortable to hold and use. So you can handle those hard-to-reach areas more easily.

## Easy to clean



Detach the head of your Philips beard trimmer and rinse it under the tap for easy cleaning. Then dry it before you put it back on the appliance.

## Built to last



All of our grooming products are built to last. They come with a 2-year warranty, never need to be oiled and are compatible with any voltage worldwide.

# Specifications

## Cutting system

- Cutter width: 32 mm
- Cutting element: Stainless steel blades
- Number of length settings: 20
- Range of length settings: 0.5 up to 10 mm
- Precision (size of steps): By 0.5 mm mm
- Non-scratch teeth: For more comfort
- Comb type: Stubble

## Accessories

- Cleaning brush

## Power system

- Battery type: Ni-MH
- Running time: Up to 45 minutes
- Charging time: 10 hours
- Worldwide voltage: 100-240 V

## Design

- Handle: Easy grip

## Ease of use

- Zoom wheel: Easily adjust length settings
- Secured length settings

## Create the look you want

- Styles: Short beard, Stubbled look

## Service

- 2-year worldwide guarantee

## Ease of use

- Battery: 1 x AAA NiMH

## Ease of use

- Charge indication: On plug
- Easy Cleaning: Washable attachments



Issue date 2022-06-02

Version: 11.1.1

© 2022 Koninklijke Philips N.V.  
All Rights reserved.

Specifications are subject to change without notice.  
Trademarks are the property of Koninklijke Philips N.V.  
or their respective owners.

[www.philips.com](http://www.philips.com)