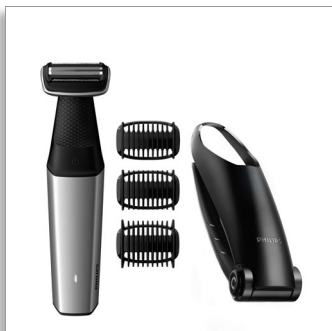


Philips Bodygroom series  
5000  
Showerproof body  
groomer

#### Skin-friendly shaver

3 combs, 3-7 mm  
60 mins' cordless use/1 hr charge  
Back attachment



BG5020/13

## Smooth full-body shave

Extra-long back attachment for hard-to-reach areas

The Series 5000 is designed to power through hair, without compromising on skin comfort. Whether on the chest or hard-to-reach areas like the back. You can use the skin friendly shaver or trim by clicking on the 3, 5 or 7 mm length combs.

#### Easy to use

- Use wet or dry
- Reach those hard-to-get-to places
- 60 minutes cordless use after a 1 hour charge
- Easy to grip

#### Skin-friendly performance

- Protects skin while shaving or trimming
- Trims hair in every direction
- Protective full body grooming

#### Built to last

- Warranty for purchase protection

# PHILIPS

Showerproof body groomer  
Skin-friendly shaver 3 combs, 3-7 mm, 60 mins' cordless use/1 hr charge, Back attachment

BG5020/13

# Highlights

## Full body grooming

Now you can confidently trim and shave everywhere on your body with just one tool. This Philips full body trimmer for men cuts hair at 3 different lengths for clean, even results on your back, shoulders, chest, abs, underarms, arms, groin and legs.

## Skin-friendly body shaver



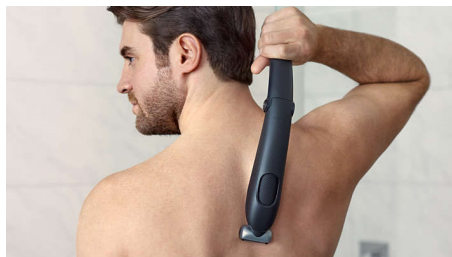
The men's body groomer is designed to capture short, long and thick hair in a single stroke. The shaver head features patented rounded tips and a hypo-allergenic foil to protect your skin from cuts and nicks.

## Bi-directional trimming guards



The shaving system comes with 3 attachable combs for 3 mm, 5 mm and 7 mm trimming, or use without a comb for a closer finish. Pre-trimming is recommended for thicker hair.

## Extra-long back attachment



Conveniently remove back hair. This attachment has been specially designed for convenient back grooming.

## Rechargeable battery power



High-power Li-ion battery for full body use, with 60 minutes of cordless use after a 1 hour charge. The battery light indicates power status, when the battery is low or full.

## 100% Showerproof



Your wet and dry body groomer is 100% water resistant, so you can use it in or out of the

shower. For best results, use on dry hair before showering.

## Ergonomic grip



Your body groomer is easy to hold and manoeuvre, with a rubber ergonomic grip for more controlled trimming.

## Built to last



All of our grooming products are built to last. They come with a 2-year warranty and they never need to be oiled.

# Specifications

## Create the look you want

- Number of length settings: 3 fixed length settings

## Accessories

- Comb: 3 body combs (3, 5, 7 mm)
- Back handle attachment

## Power

- Charging: 1 hour full charge
- Battery type: Lithium-ion
- Run time: 60 minutes

## Design

- Handle: Ergonomic grip and handling

## Service

- 2-year worldwide guarantee

## Cutting system

- Cutter width: 32 mm
- Shaving element: Foil with two pre-trimmers
- Skin comfort: Skin comfort system, Comfort in sensitive areas

## Ease of use

- Maintenance-free: No oil needed
- Wet and Dry: Fully washable, Showerproof and easy cleaning
- Operation: Cordless use
- Secured length settings



Issue date 2024-04-13

Version: 1.2.1

© 2024 Koninklijke Philips N.V.  
All Rights reserved.

Specifications are subject to change without notice.  
Trademarks are the property of Koninklijke Philips N.V.  
or their respective owners.

[www.philips.com](http://www.philips.com)