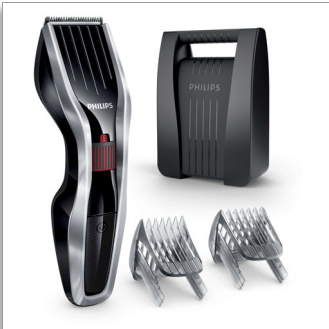




Philips Hairclipper series
5000
Hair clipper

Stainless steel blades

24 length settings
75mins cordless use/8h charge
Adjustable beard comb and case



HC5440/80

HAIRCLIPPER Series 5000 - Cuts twice as fast*

with DualCut technology for a faster, sharper cut

The HAIRCLIPPER Series 5000 is built to last, and engineered to perform. The innovative cutting element, stainless steel blades and adjustable beard and hair combs are designed to give you a fast, sharp cut, time after time.

Easy to use

- 'Quick release' blades for easy cleaning
- 75 minutes of cordless use after an 8-hour charge

Performance

- Self-sharpening steel blades for long-lasting sharpness
- Double-sharpened cutting element with reduced friction

Precise length control

- Easy to select and lock in 24 length settings: 0.5 to 23mm
- Includes a beard comb for 23 adjustable lengths: 1 to 23mm

Built to last

- 2yr guarantee plus 3yrs when you register the product online
- The blades never need oiling
- Hard case for reliable storage

PHILIPS

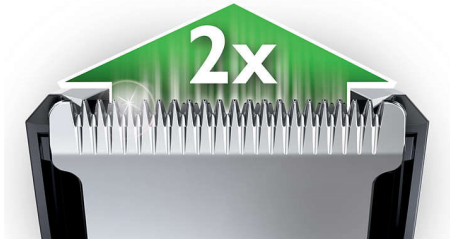
Hair clipper

Stainless steel blades 24 length settings, 75mins cordless use/8h charge, Adjustable beard comb and case

HC5440/80

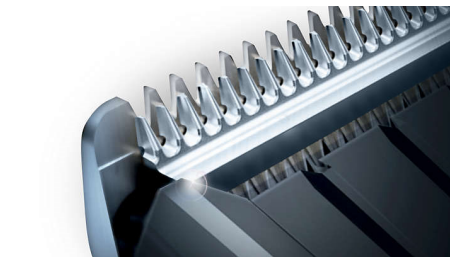
Highlights

DualCut Technology



Power through any hair type with our advanced DualCut Technology, which combines a double-sharpened cutting element with low-friction engineering. The innovative cutting element is designed to cut hair twice as fast as regular Philips clippers, with the added confidence of a robust steel guard for ultimate durability.*

Stainless steel blades



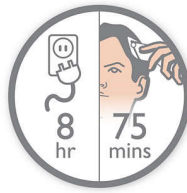
Self-sharpening stainless steel blades for long-lasting sharpness.

24 lock-in length settings



Turn the zoom wheel to simply select and lock in the length you want, with 23 length settings from 1 to 23mm, and precisely 1mm between each length. Or you can use it without the comb for a close 0.5mm trim.

Corded & powerful cordless use



Use the clipper corded or cordless for maximum power and freedom, with 75 minutes of cordless power after 8 hours of charging.

Easy to clean



Simply click open the detachable head to quickly release and wash the blades.

5-year worldwide warranty



All of our grooming products are built to last. They come with a worldwide guarantee and worldwide voltage compatibility. Simply register your clipper on www.philips.com/ 5years to receive an additional 3 years on top of your standard 2-year Philips guarantee, giving you a 5-year worldwide warranty in total.

Bonus adjustable beard comb



Turn the wheel to simply select and lock in the length you want, whether you have a beard or you want perfect stubble. Just attach the adjustable beard comb for 23 lock-in length settings from 1 to 23mm, with precisely 1mm between each length. Or you can use it without the comb for a close 0.5mm trim.

Hard storage case



Your clipper comes with a reliable hard case for complete durability, to ensure it is kept in optimum condition for ultimate power and precision, time after time.

No oil needed



No oil needed, for easy maintenance and to save you time.



Hair clipper

Stainless steel blades 24 length settings, 75mins cordless use/8h charge, Adjustable beard comb and case

HC5440/80

Specifications

Power system

- Charging time: 8 hour(s)
- Battery type: Ni-MH
- Operation: Corded and cordless
- Running time: 75 minutes

Storage

- Case: Hard case

Service

- 2-year worldwide guarantee: Yes, Plus 3-years with registration

Cutting system

- Cutter width: 41 mm
- Cutting element: Stainless steel blades
- Number of length settings: 24
- Range of length settings: From 0.5 to 23 mm
- Precision (size of steps): By 1 mm
- Precision beard comb: 1-23mm adjustable beard comb

Ease of use

- Cleaning: Washable blades
- Maintenance free: No oil needed



Issue date 2024-02-16

Version: 11.0.1

UPC: 0 75020 04665 9

© 2024 Koninklijke Philips N.V.
All Rights reserved.

Specifications are subject to change without notice.
Trademarks are the property of Koninklijke Philips N.V.
or their respective owners.

www.philips.com

* Versus its Philips predecessor