



Philips  
Curler

**SalonCurl Ceramic**  
Ceramic  
20 mm tong

**HP4658/00**

# Create the curls you desire

## SalonCurl Ceramic curling iron

Tight, loose, sculpted or bouncy. Give your hair style exactly the type of curls and waves you want with the SalonCurl Ceramic. A 20mm barrel and professional ceramic coating sets this professional curling iron apart from the rest

### **Beautifully styled hair**

- Slide on brush for added volume and beautiful waves
- 180°C temperature for beautiful results
- 20mm tong for beautiful curls

### **Ease of use**

- Ready for use indicator
- Cool tip for easier and safer use
- Swivel cord to prevent tangled wires
- On/off indication light
- Universal voltage
- Fast heat up time, ready to use in 60 seconds
- 2.2 m power cord for maximum flexibility

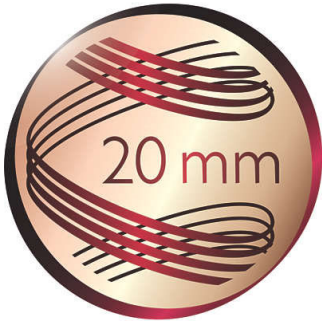
### **Less hair damage**

- Protective ceramic coating

# PHILIPS

# Highlights

## 20mm tong



If you want to create beautiful curls, you need to use a curling iron with a medium sized diameter. 20 mm is the perfect size for creating fashionable wide curls and waves.

## Gentle on your hair



Protective ceramic coating ensures even heat distribution and less hair damage for shiny and soft hair.

## 180°C temperature



This high temperature enables you change the shape of your hair, and gives you that perfect look like you've just come from the salon.

## Slide-on brush



This attachment can be easily placed on tong to create additional volume and beautiful wavy styles.

## Cool tip



The tip of the styler is made from a special heat insulating material to keep it cool; you can safely hold it while you're styling for optimal ease of use.

## Instant heat up



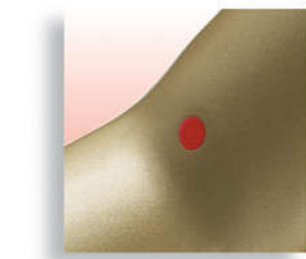
The curler has a fast heat up time, being ready to use in 60 seconds.

## On/off indication light



On/off indication light

## Ready for use indicator



Ready for use indicator: the dot turns white when ready for use

## Swivel cord



Useful swivel cord technology rotates the cord to prevent tangled wires.

## 2.2 m power cord

2.2 m power cord for maximum flexibility

# Specifications

## Technical specifications

- Color/finishing: dark purple and gold
- Heating time: 60s
- Barrel diameter: 20 mm
- Cord length: 2.2 m
- Maximum temperature: 180 °C
- Voltage: worldwide
- Heater type: PTC ceramic heater
- Temperature range: one setting

## Features

- Ceramic coating

- Ready for use indicator
- Cool tip
- Swivel cord
- Hanging loop

## Hair type

- End result: Tight and bouncy curls
- Hair thickness: Thin, Medium, Thick
- Hair length: Medium, Long

## Service

- 2-year worldwide guarantee



Issue date 2022-06-25

Version: 10.1.1

© 2022 Koninklijke Philips N.V.  
All Rights reserved.

Specifications are subject to change without notice.  
Trademarks are the property of Koninklijke Philips N.V.  
or their respective owners.

[www.philips.com](http://www.philips.com)