

Philips Click & Style
Shaving heads

ComfortCut blades

Fits Click & Style (S7xx)
Fits Star Wars Shaver SW17x



SH30/20

Reset your shaver to new

Change heads every 2 years for the best results

Within two years your shaver heads cut 9 million hairs on your face. Replace the shaver heads and get back to 100% performance. Compatible with the Click & Style Shaver.

Easy to use

- Easy click off, click on
- Reset your shaver to new

Compatibility

- Replacement heads for Click & Style shavers

PHILIPS

Shaving heads

ComfortCut blades Fits Click & Style (S7xx), Fits Star Wars Shaver SW17x

Specifications

Shaving heads

- Shaving heads per packaging: 2
- Fits product type: Click and Style (S7xx)

Cleaning

- Usage: Use cleaning spray HQ110

SH30/20

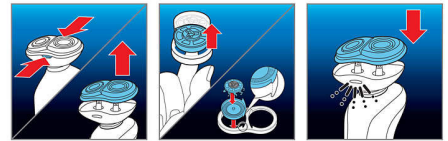
Highlights

Compatible with Click & Style



SH30 (2 pack) replacement heads are compatible with Click & Style (S7xx, YS5xx) and Star Wars shaver SW170.

Simple replacement



1. Press the release buttons on the shaving unit and pull the shaving head holder off the shaving unit.
2. Turn the retaining rings anti-clockwise and lift them out.
3. Take out the old shaving heads and carefully insert replacements; make sure the projections of the shaving heads fit exactly into the recesses.
4. Place the retaining rings back onto the shaving head holder and turn them clockwise.
5. Reattach the shaving head holder to the shaving unit ("click").

Reset your shaver to new



To get back to 100% performance, replace your shaving heads every 2 years.



Issue date 2024-02-17

Version: 10.0.1

© 2024 Koninklijke Philips N.V.
All Rights reserved.

Specifications are subject to change without notice.
Trademarks are the property of Koninklijke Philips N.V.
or their respective owners.

www.philips.com