

Philips  
Straightener

220°C  
Nano-Diamond Ceramic

HP4686/07



# Maximum Control Grip

## SalonStraight Ceramic

Take control with the SalonStraight Control. Advanced Nano-Diamond Ceramic plates coupled with a professional styling temperature of 230°C give you the power to create beautifully shiny, straight styles.

### Ease of use

- Swivel cord to prevent tangled wires
- Automatic shut-off after 60 min
- On/off indication light
- Easy storage hook for convenient storage
- Salon length 3 m power cord for maximum flexibility

### Beautifully styled hair

- 220°C professional high heat for perfect salon results
- Rubber handle grip for easy salon performance
- Adjustable heat settings to ensure smooth results for every hair type
- Ceramic Nano-Diamond plates for extra smooth gliding and shiny results

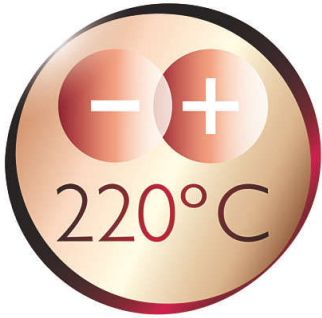
### Less hair damage

- EHD+ technology for more protection and shinier results

**PHILIPS**

# Highlights

## 220°C professional temperature



This high temperature enables you to change the shape of your hair, and gives you that perfect look, as if you've just come from the salon.

## Rubber handle grip

The soft, rubber handled grip is ergonomically designed. Non slip, it has been tested by professionals for easy handling and salon performance.

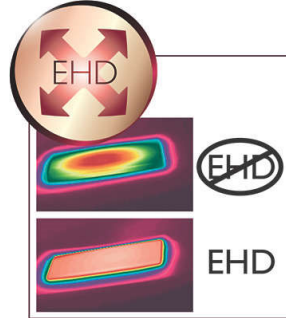
## Adjustable heat settings

Adjustable heat settings allow you to quickly and easily change the styling temperature from low to high. This enables you to select the perfect temperature for your specific hair and needs so you can always get the smooth, styling result you want.

## Ceramic Nano-Diamond plates

Besides being a girl's best friend, diamonds are also physically known as the hardest surface possible. This knowledge has been used to optimise our Ceramic straightening plates. These advanced Ceramic Nano-Diamond straightening plates offer optimal heat transfer and a super smooth, scratch resistant surface for extra smooth gliding and beautiful shiny results.

## EHD+ technology



Advanced Philips EHD+ technology means that your styler will always distribute the heat very evenly - even at high temperatures, and prevents damaging hot spots. This gives added protection and thus helps to keep your hair healthy and shiny.

## Easy storage hook



The rubberised hook is located at the base of the handle and provides another storage option, particularly convenient for use in the home or when staying at a hotel.

## Swivel cord



Useful swivel cord technology rotates the cord to prevent tangled wires.

## Safe usage



Some hair straighteners and curling irons have been equipped with an automatic shut-off feature. This feature has been designed to provide peace of mind. If left on, the appliance will automatically switch off after 60 min.

## On/off indication light



On/off indication light

## 3 m cord

The longer length results in improved flexibility and ease of handling, so you can use it anywhere you want.

# Specifications

## Technical specifications

- Cord length: 3 m

## Hair type

- Current hair style: Straight, Wavy, Curly
- End result: Straight

- Hair length: Long, Medium, Short
- Hair thickness: Thin, Thick
- For fragile hair

## Serviceability

- Replacement



Issue date 2022-06-02

Version: 3.0.1

© 2022 Koninklijke Philips N.V.  
All Rights reserved.

Specifications are subject to change without notice.  
Trademarks are the property of Koninklijke Philips N.V.  
or their respective owners.

[www.philips.com](http://www.philips.com)