

PHILIPS

Wet and Dry electric
shaver

SatinShave
Essential

for legs

Single-foil shaver

Battery operated

HP6342/00



Safe and easy shaving

With this all-round shaver you can shave your whole body quickly, easily and safely. The secret is the small shaving head, which cuts quickly while protecting your skin. A soft and smooth feeling after every use!

Easy to use

- Battery operated
- Wet and dry for use in bath or shower

Effortless control

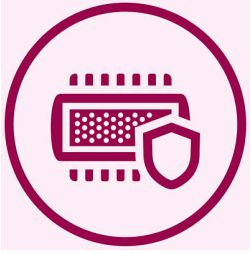
- Profiled, ergonomic grip

Safe shaving

- Safe shaving system for ultimate skin protection

Highlights

Safe shaving system



The gentle small shaving head protects your skin, leaving it smooth and soft

Slim ergonomic design



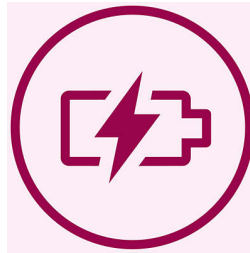
For comfortable handling

Wet and dry use



For a gentle and comfortable use during your shower or bath routine with anti-slip grip for optimal wet and dry use.

Battery operated



Shave anywhere with this cordless lady shaver.

Specifications

Accessories

- Cleaning brush
- 2 x AA batteries
- Trimming Comb
- Small shaving head
- Travel cap
- Efficiency cap
- Luxury pouch

Technical specifications

- Voltage: 2 x 1.5 V
- Number of shaving foils: 1

Ease of use

- Handle: Ergonomic
- Cordless
- Wet and dry use

Performance

- Shaving head: Single-foil shaver

