

PHILIPS

 Product Picture

Wet and Dry electric
shaver

SatinShave Essential

for legs

Single-foil shaver

Battery operated

HP6341/00

Safe and easy shaving

With this all-round shaver you can shave your whole body quickly, easily and safely. The secret is the small shaving head, which cuts quickly while protecting your skin. A soft and smooth feeling after every use!

Easy to use

- Battery operated
- Wet and dry for use in bath or shower

Effortless control

- Profiled, ergonomic grip

Safe shaving

- Safe shaving system for ultimate skin protection

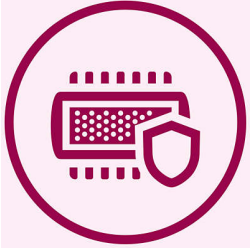
SatinShave Essential

Wet and Dry electric shaver

HP6341/00

Highlights

Safe shaving system



The gentle small shaving head protects your skin, leaving it smooth and soft

Slim ergonomic design



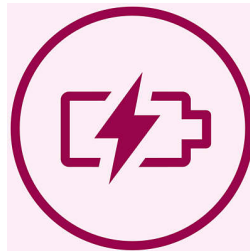
For comfortable handling

Wet and dry use



For a gentle and comfortable use during your shower or bath routine with anti-slip grip for optimal wet and dry use.

Battery operated



Shave anywhere with this cordless lady shaver.

Specifications

Accessories

Cleaning brush
2 x AA batteries
Travel cap

Technical specifications

Voltage: 2 x 1.5 V
Number of shaving foils: 1

Ease of use

Handle: Ergonomic
Cordless
Wet & Dry

Performance

Shaving head: Single-foil shaver

