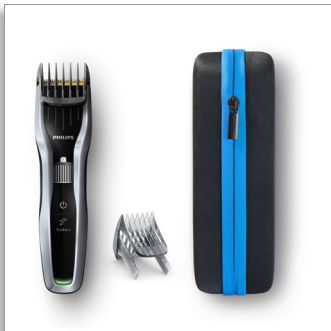




Philips Hairclipper series
5000
Hair clipper

Titanium Blades

24 length settings
90 mins cordless use/1 hr charge
Adjustable beard comb and case



HC5450/93

HAIRCLIPPER Series 5000 - Cuts twice as fast*

with DualCut technology for a faster, sharper cut

The HAIRCLIPPER Series 5000 is built to last and engineered to perform. The innovative cutting element, durable titanium blades and adjustable beard and hair combs are designed to give you a fast, sharp cut, time after time.

Easy to use

- 90 minutes of cordless use after a 1-hour charge
- 'Quick release' blades for easy cleaning

Performance

- Extra-sharp blades for an extra-sharp result
- Double-sharpened cutting element with reduced friction
- Turbo power button boosts cutting speed

Precise length control

- Easy to select and lock in 24 length settings: 0.5 to 23mm
- Includes a beard comb for 23 adjustable lengths: 1 to 23 mm

Built to last

- 2-year guarantee plus 3 years when you register the product online
- The blades never need oiling
- Exclusive storage case to store your clipper and accessories

PHILIPS

Hair clipper

Titanium Blades 24 length settings, 90 mins cordless use/1 hr charge, Adjustable beard comb and case

HC5450/93

Highlights

DualCut Technology



Power through any hair type with our advanced DualCut Technology, which combines a double-sharpened cutting element with low-friction engineering. The innovative cutting element is designed to perform time after time, cutting hair twice as fast as standard Philips clippers, with a robust stainless steel guard for ultimate durability.*

Titanium blades



Get a perfect yet protective trim with the self-sharpening titanium-coated steel blades, created for long-lasting performance, time after time.

24 lock-in length settings



Turn the zoom wheel to simply select and lock in the length you want, with 23 length settings from 1 to 23 mm and precisely 1 mm between each length. Or you can use it without the comb for a close 0.5 mm trim.

Corded and powerful cordless use



Use the clipper corded or cordless for maximum power and freedom, with 90 minutes of cordless power after 1 hour of charging.

Turbo boost



The turbo power button boosts cutting speed for a perfect cut even on the thickest hair.

Easy to clean



Simply click open the detachable head to quickly release and wash the blades.

5-year worldwide warranty



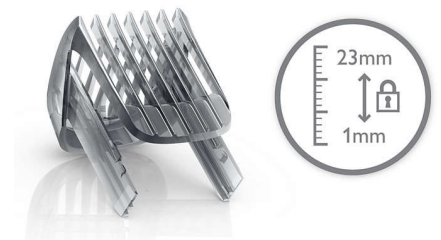
All of our grooming products are built to last. They come with a worldwide guarantee and worldwide voltage compatibility. Simply register your clipper at www.philips.com/ 5 years to receive an additional 3 years on top of your standard 2-year Philips guarantee, giving you a 5 year worldwide warranty in total.

Exclusive storage case



The semi-hard storage case securely stores your clipper and all accessories. Keeps all your items together in one place, keeping your bathroom tidy. The new case can easily hold the comb, clipper and adaptor cable.

Bonus adjustable beard comb



Turn the wheel to simply select and lock in the length you want, whether you have a beard or you want perfect stubble. Just attach the adjustable beard comb for 23 lock-in length settings from 1 to 23 mm, with precisely 1mm between each length. Or you can use it without the comb for a close 0.5-mm trim.



Hair clipper

Titanium Blades 24 length settings, 90 mins cordless use/1 hr charge, Adjustable beard comb and case

HC5450/93

Specifications

Power system

- Charging time: 1 hour(s)
- Battery type: Ni-MH
- Operation: Corded and cordless
- Running time: 90 minutes

Storage

- Case: Exclusive travel case

Service

- 2-year worldwide guarantee: Yes, Plus 3 years with registration

Cutting system

- Cutting element: Titanium blades
- Cutter width: 41 mm
- Number of length settings: 24
- Range of length settings: From 0.5 to 23 mm
- Precision (size of steps): By 1 mm
- Precision beard comb: 1–23 mm adjustable beard comb

Ease of use

- Maintenance-free: No oil needed
- Cleaning: Washable blades



Issue date 2024-02-16

Version: 1.0.1

EAN: 87 10103 89940 2

© 2024 Koninklijke Philips N.V.
All Rights reserved.

Specifications are subject to change without notice.
Trademarks are the property of Koninklijke Philips N.V.
or their respective owners.

www.philips.com

* Versus its Philips predecessor