

PHILIPS

Hairdryer

DryCare Advanced

ThermoProtect Ionic

2200 W

Ionic Care

Massaging diffuser



HP8233/00

Fast dry at a lower temperature with ThermoProtect

with massaging diffuser and 11 mm styling nozzle.

Protect your hair while enjoying fast drying results. This hair dryer has multiple speed and temperature settings. Features include ThermoProtect for fast drying at a constant caring temperature, Ionic Care and TurboBoost.

Easy to use

- Elegant, feminine design emphasising performance and quality
- 1.8 m power cord
- Easy storage hook for convenient storage
- Removable air flow filter makes cleaning quick and easy

Beautifully styled hair

- Professional 2200 W for perfect salon results
- Ultra slim 11 mm styling nozzle for precision styling
- Maximises volume and boosts curls while gently massaging scalp
- Turbo boost for extra-fast drying
- Six flexible speed and temperature settings for full control
- Cool Shot sets your style

Less Hair Damage

- ThermoProtect temperature setting
- Ionic conditioning for shiny, frizz-free hair

Highlights

Premium Design



This hairdryer embodies a modern, sophisticated approach to design. Soft, fluid contours and elongated proportions subtly communicate femininity, while precision detailing and high-quality materials and finishes are evidence of the product's superior performance.

ThermoProtect temperature



The ThermoProtect temperature provides the optimal drying temperature and gives additional protection from overheating the hair. With the same powerful airflow, you will get the best results, whilst being kind to your hair.

Professional 2200 W



This 2200 W professional hairdryer creates a powerful airflow. The resulting combination of power and speed makes drying and styling your hair quicker and easier.

Ionic conditioning



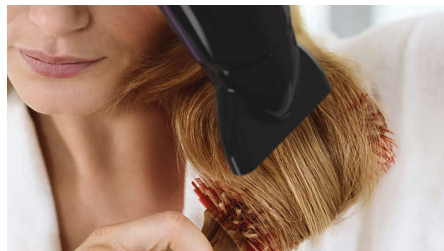
Give your hair instant care with ionic conditioning. Charged negative ions eliminate static, condition your hair and smooth the hair cuticles to intensify hair's shine and glossiness. The result is smooth and frizz-free hair with beautiful shine.

Speed and temperature settings



The speed and heat required can be easily adjusted to create the perfect style. Six different settings ensure full control for precise and tailored styling.

Ultra slim styling 11 mm nozzle



The ultra-thin styling nozzle concentrates the flow of hair through the 11-mm nozzle for precision styling on specific areas. Great for touch-ups or to set your style.

Turbo boost



The turbo boost button increases the airflow, to dry your hair even more quickly.

Asymmetric massaging diffuser



The asymmetric massaging diffuser has a unique asymmetric design that is contoured to the head, making it easier and more intuitive to use. The diffuser spreads the flow of air across the hair, drying hair more healthily, boosting volume and reducing frizz, while the addition of massage helps stimulate the scalp and improve hair vitality. For best results, hold close to the crown and root area and let the diffuser's massaging textured pins encourage volume, add bounce and shape curls.

Cool Shot



A must-have professional function for hair stylers. The Cool Shot button provides an intense burst of cold air. It is used after styling to finish and set the style.

Specifications

Weight and dimensions

A-Box Dimensions: Length = 63cm,

Width = 35cm, Height = 25 cm

A-Box Weight: 6.3 kg

F-Box Dimensions: Depth = 11cm,

Height = 23cm, Width = 31cm

Product size: Width = 22cm, Height = 31 cm,

Length = 10 cm

F-Box weight: 1 kg

Product weight (excl. pack): 0.6 kg

Technical specifications

Colour/finishing: Glossy Black and Purple gradient

Power: 2200 W

Voltage: 220-240 V

Cord length: 1.8 m

Frequency: 50-60 Hz

Wattage: 2200 W

Motor: DC Motor

Housing material: PC

Features

Foldable handle: No

Ceramic coating: Ceramic Element

Cool shot

Diffuser: Massaging volume diffuser

Dual voltage: No

Travel pouch: No

Ion conditioning

Hanging loop

Number of attachments: 2

Nozzle / Concentrator: Ultra slim styling 11 mm nozzle

Turbo Boost

Service

2 year guarantee

