

# PHILIPS

Face and Body

OneBlade Pro

Rechargeable Li-Ion battery

14-length precision comb

Wet and Dry use

LED digital display



QP6550/30



## Trim, edge and shave any length of hair

Designed to cut hair, not skin

Philips OneBlade Pro Face + Body trims, edges and shaves any length of hair. You get a blade for your face and one with a skin guard for your body. Forget about using multiple tools. OneBlade does it all.

### Easy to use

- Each blade lasts 4 months
- Create precise edges and sharp lines
- Use wet or dry
- Charge up and go

### Comfortable shave

- Unique OneBlade technology
- Shave it off
- Guards against nicks on sensitive areas
- Easily trim in any direction

### Sharp edges

- Edge it up

### Even trim

- Get the exact length you're after
- Trim it down

# Highlights

## Unique OneBlade technology



Designed for facial styling and body grooming, the Philips OneBlade trims, edges and shaves any length of hair. It delivers an easy and comfortable shave thanks to a glide coating and rounded tips. And with a cutter that moves at 200 x per second, it's efficient even on longer hairs.

## Trim it down (Face + Body)



Trim your beard to an even length with the included adjustable precision comb. Dial up one of the 14 lock-in length settings to get everything from a 5 o'clock shadow, to a tight trim, to a longer beard style. Trim your body hair in any direction with the click-on body comb (3 mm).

## Edge it up

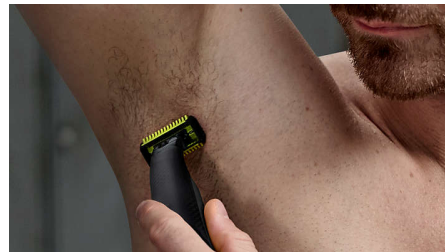


Get precise lines in seconds with the dual-sided blade that enables you to see every hair you're cutting.

## Shave it off

The OneBlade shaver doesn't shave as close as a traditional blade, ensuring your skin stays comfortable. Go against the grain and shave off any length of hair easily.

## Guard



Attach the skin guard for an extra layer of protection on sensitive areas of the body.

## Click-on body comb



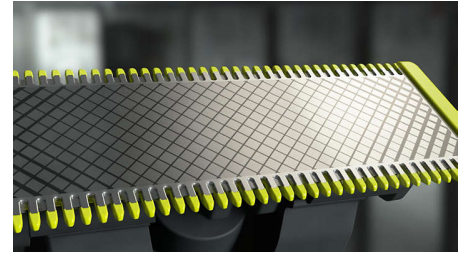
Simply attach the 3 mm body comb to trim in any direction.

## 14-length precision comb



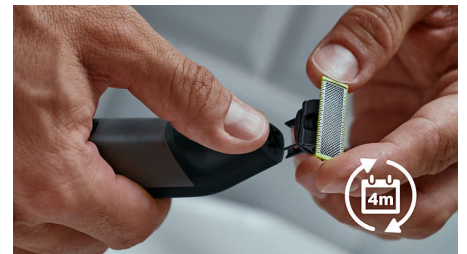
A wet and dry shaver that allows you to trim to your preferred hair length with 14 different settings from 0.4 mm to 10 mm.

## Dual-sided blade



OneBlade follows the contours of your face, allowing you to easily and comfortably trim and shave all areas. Use the dual-sided blade to style your edges and create clean lines by moving the blade in any direction.

## Durable OneBlade



Easily replace your blade once every 4 months\* for optimal performance. A green usage indicator will appear once the blade is worn out.

## Wet and dry



Use this waterproof razor at the sink or take it with you into the shower. The OneBlade wet and dry razor is easy to clean and can be used with or without foam.

# Specifications

## Trimming and shaving performance

**Shaving system:** Contour-following technology, Dual protection system

**Trimming system:** Contour-following technology

## Accessories

**Comb:** 14-length comb (0.4 - 10 mm), Click-on skin guard, Click-on body comb

**Pouch:** Soft pouch

**Extra replaceable blade**

## Power

**Battery type:** Lithium-ion

**Run time:** 120 minutes

**Charging:** 1 hour full charge

**Automatic voltage:** 100-240 V

**Max power consumption:** 5.4 W

## Design

**Colour:** Chrome

**Handle:** Ergonomic grip and handling

## Service

**Replacement head:** Replace every 4 months\*, QP210, QP220, QP230, QP610, QP620

**2 year warranty:** On the handle

## Ease of use

**Display:** full LED digital display, Travel lock indicator

**Charging:** Rechargeable

**Wet and dry use**

