

PHILIPS

Epilator

SatinPerfect

Total body and face

Cordless

HP6576



Smooth in minutes, lasts for weeks

SatinPerfect's extra wide head and textured ceramic discs remove more hair in one stroke, giving you the ultimate epilation experience! Don't you want long-lasting smoothness for up to four weeks? Smooth in minutes, lasts for weeks!

Comfortable epilation

- Up to 40 minutes wirefree epilation, quick 1-hour recharge
- Washable epilation head for optimal hygiene
- Vibrating massage bar stimulates and soothes the skin

Precious solutions for precious body parts

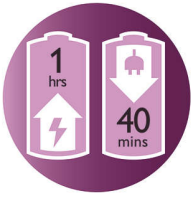
- Shave, trim and contour for ultra close and smooth results

Efficient epilation for long lasting smoothness

- Extra wide head removes more hair in one stroke
- Opti-light reveals even the finest hair
- High performance discs gently remove even finest hairs
- Optimal performance cap pivots for optimal skin contact
- Active hairlifter lifts and removes even flat lying hair

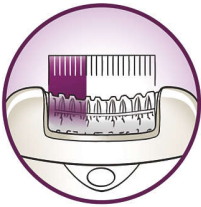
Highlights

Cordless



Epilate anywhere with this cordless epilator. Up to 40 minutes wire-free epilation, quick 1-hour recharge.

Extra wide head

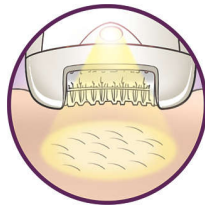


Extra wide epilation head catches and removes more hair in one stroke for long lasting and super smooth results in minutes

Gentleness system

Gently vibrating massage bar stimulates and soothes the skin for a pleasant epilation process

Opti-light



Built-in Opti-light reveals tiny, fine hairs clearly

Optimal performance cap



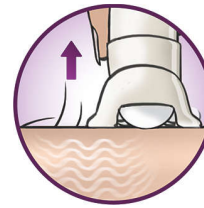
The pivoting movement of the performance cap helps you to keep the epilator at the ideal angle for optimal results

Shave, trim and style



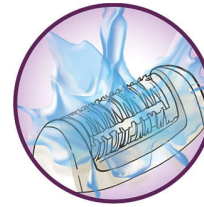
Shave, trim and contour for ultra close and smooth results

Unique hairlift&vibrate system



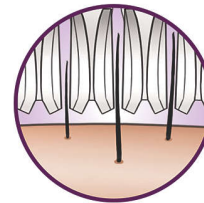
Unique hairlift&vibrate system uses subtle vibrations to lift fine hairs, making it easy to remove them

Washable epilation head



This epilator has a washable epilation head. The head can be detached and cleaned under running water for better hygiene

High performance discs



Textured high performance ceramic discs prevent even the finest hair slipping through

Specifications

Comfortable epilation

Cordless
Gentleness system
Two speed settings

Convenience and hygiene

Cleaning brush
Washable epilation head
Luxury pouch

Fast, long lasting epilation

Extra wide head
Active hair lifter
Body contouring head

Ceramic textured discs
Hair primer
Optimal performance cap
Opti-light
Pressure control

Precious and luxury solutions

Shave, trim and contour
Luxury tweezer set

Technical details

Catching actions per minute: 81,600
Colour: Gold champagne
Number of catching points: 32

Charge time: 1 hour(s)
Rotations per minute: 2550
Cordless/rechargeable epilator
Mains epilator
Frequency: 50–60 Hz
Runtime mains epilator: 40 min
Voltage: 100–240 V
Wattage: 16

