

Philips Shaver series 7000
Shaving heads

GentlePrecision blades

Fits S7000 (S7xxx)

Fits Star Wars Shaver SW77xx

SH70/51



Reset your shaver to new

Change heads every 2 years for best results

Within two years your shaver heads cut 9 million hairs on your face. Replace the shaver heads and get back to 100% performance. Compatible with the Series 7000 Shaver.

Easy to use

- Reset your shaver after replacing shaving heads
- Easy to replace shaving heads
- Replace your shaving heads in just two steps
- Reset your shaver to new

Compatibility

- Replacement heads for Shaver series 7000

Smooth glide, sensitive shave

- GentleTrack blades enable a close, skin-friendly shave
- Super Lift & Cut shaver for a comfortably close shave

PHILIPS

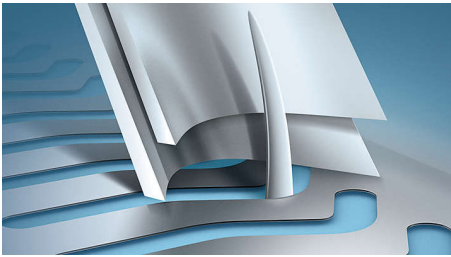
Highlights

Compatible with Series 7000



SH70 replacement heads are compatible with Shaver series 7000 (S7xxx) and Star Wars shaver SW7700.

GentleTrack Precision Blades



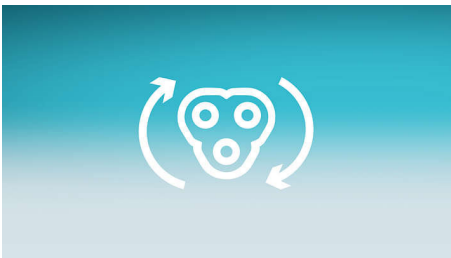
The newly designed blades comfortably cut hairs in the most optimal cutting position, thereby reducing irritation caused by tugging and pulling.

Super Lift & Cut Action



The dual blade system built into our electric shaver lifts hairs to cut comfortably below skin level for a closer shaving experience.

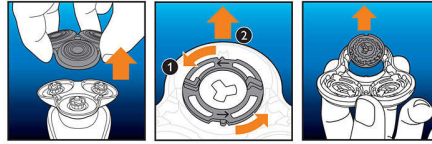
Replacement reminder



The latest Philips shavers have an inbuilt replacement reminder in the form of a shaving unit symbol. This

symbol will light up and indicate you when to replace shaving heads.

Simple replacement



1. Open the shaver by pressing the "release" button;
2. Remove the retainer by turning the lock counterclockwise; 3. Take out the old shaving heads and carefully insert replacements; check that the heads align exactly in the setting; 4. Replace the retainer and secure it by turning the lock clockwise; 5. When you close the shaving head properly, you will hear it click into place.

How to reset your shaver



After replacing shaving heads, you can reset the replacement reminder by pressing the on/off button for more than 7 seconds. Otherwise, replacement trigger will turn off automatically after 9 successive shaves.

Reset your shaver to new



To get back to 100% performance, replace your shaving heads every 2 years.

Specifications

Shaving heads

- Shaving heads per packaging: 3
- Fits product type: Shaver series 7000 (S7xxx)

Cleaning

- Usage: Use cleaning spray HQ110



Issue date 2023-03-18

Version: 13.3.1

EAN: 87 10103 71361 6

© 2023 Koninklijke Philips N.V.
All Rights reserved.

Specifications are subject to change without notice.
Trademarks are the property of Koninklijke Philips N.V.
or their respective owners.

www.philips.com