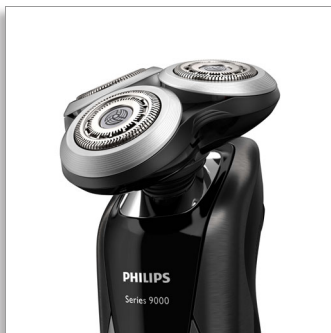




Philips
Shaving heads

Discontinued
Buy SH91 instead



SH90/70

SH90 has been replaced by SH91

Change heads every 2 years for best results

Within two years your shaver heads cut 9 million hairs on your face. Replace the shaver heads and get back to 100% performance. Compatible with the Series 9000 Shaver.

Improved Version

- The easiest way to keep your shaver at best

Easy to use

- Reset your shaver after replacing shaving heads
- Easy to replace heads
- Replace your shaving heads in just two steps
- Reset your shaver to new

Perfection in every pass

- Our best shaving system on 1-3 day beard

PHILIPS

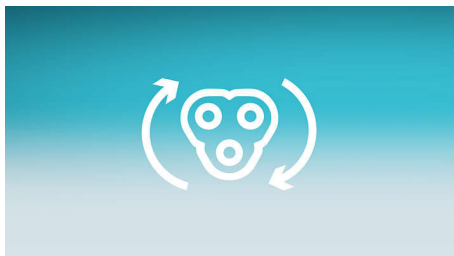
Highlights

Upgraded Solution



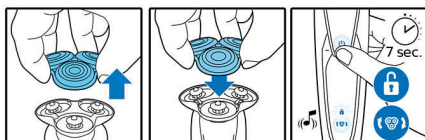
The upgraded solution makes the maintenance of your Philips Shaver easier than ever. This new format will allow you to install the new shaving heads in just two steps, facilitating thorough cleaning of the shaver and optimizing your daily shave.

Replacement reminder



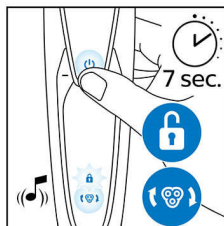
The latest Philips shavers have an inbuilt replacement reminder in the form of a shaving unit symbol. This symbol will light up and indicate you when to replace shaving heads.

Simple replacement



1. Pull the shaving head holder off. 2. Replace the shavings heads with new ones. 3. Reattach the shaving head holder. 4. To reset the shaver, press and hold the on/off button for more than 5 seconds.

How to reset your shaver



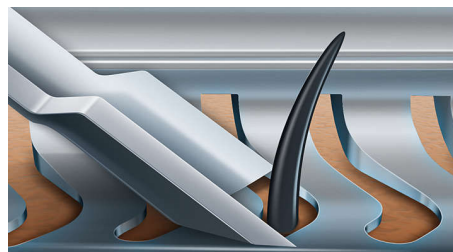
After replacing shaving heads, you can reset the replacement reminder by pressing the on/off button for more than 7 seconds. Otherwise, replacement trigger will turn off automatically after 9 successive shaves.

Reset your shaver to new



To get back to 100% performance, replace your shaving heads every 2 years.

V-Track Blade System PRO



Get the perfect close shave. The V-Track Precision PRO Blades gently positions each hair in the best cutting position, from 1 day up to 3 day beard and even the flat laying and different length of hairs. Cuts 30% closer* in less strokes leaving your skin in great condition.

Shaving heads

- Fits product type: Shaver series 9000 (S9xxx)
- Upgraded shaving heads: SH90 has been replaced by SH91

Specifications



Issue date 2023-09-21

Version: 11.11.1

EAN: 87 10103 87418 8

© 2023 Koninklijke Philips N.V.
All Rights reserved.

Specifications are subject to change without notice.
Trademarks are the property of Koninklijke Philips N.V.
or their respective owners.

www.philips.com

* Versus its Philips predecessor