

PHILIPS

Wet and dry electric shaver

Shaver series 9000

V-Track blade system PRO

8 direction ContourDetect Heads

SmartClean System Plus

SmartClick beard styler



S9711/31



Perfection in every pass

Cuts up to 20% more hair* in a single pass

The Shaver 9000 is our most advanced shaver yet. The unique contour detect technology offers exceptional coverage over every contour of your face, and the V-Track system guides hairs into the best cutting position for the closest result.

Designed for perfection

- Our best shaving system on 1–3-day beards
- Heads flex in 8 different directions for a superb result

A comfortable shave

- Personalise your shave by choosing between three settings
- Get a comfortable dry or refreshing wet shave with Aquatec

Easy to use

- Intuitive icons make the functions easy to use
- 60 minutes cordless shaving after a one-hour charge
- Shaver can be rinsed clean under the tap
- With 2 year guarantee

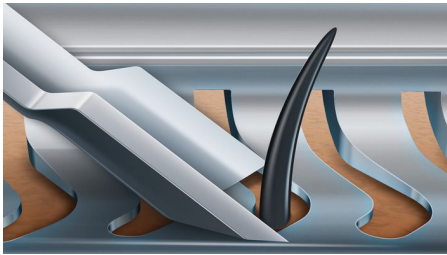
Get the most of your shaver

- Keep your shaver in great condition with SmartClean
- Click-on beard styler with 5 length settings



Highlights

V-Track blade system PRO



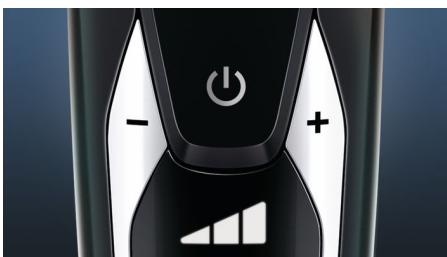
Get the perfect close shave. The V-Track Precision PRO Blades gently position each hair in the best cutting position, from 1-day to 3-day beards, including flat-lying hairs and hairs of different lengths. Cuts 30% closer* in fewer strokes, leaving your skin in great condition.

8 direction ContourDetect Heads



Follow every contour of your face and neck with 8 directional ContourDetect heads. You'll catch 20% more hairs with every pass, resulting in an extremely close, smooth shave.

Personal comfort settings



Choose between 3 modes to customise your shave: Sensitive — for a gentle yet thorough shave. Normal — for a thorough, everyday shave. Fast — for a quick shave that saves you time.

Aquatec Wet & Dry



Choose how you prefer to shave. With the Aquatec Wet & Dry seal, you can opt for a quick yet comfortable dry shave. Or you can shave wet — with gel or foam — even under the shower.

SmartClean System PLUS



At the touch of a button SmartClean PLUS cleans, lubricates, dries and charges your shaver, so it'll perform at its best every day.

SmartClick beard styler



Change your look with the SmartClick Beard Styler attachment. Choose from 5 length settings to create anything from a perfect stubble look to a short, neatly trimmed beard. Rounded tips and combs are designed to prevent skin irritation.

Digital display



The intuitive display shows relevant information, enabling you to get the best performance out of your shaver: - 3 digit (%) battery indicator - Cleaning Indicator - Battery Low Indicator - Replacement Head Indicator - Travel Lock Indicator.

60 minutes of cordless shaving



Now with the most superior battery life of all Philips Shavers, the charging system gives you two convenient options: 60 minutes of running time after a single one-hour charge, or quick charge for one full shave. All Shaver series 9000 models are designed to operate only in cordless mode to ensure safety in wet environments.



IF DESIGN AWARD 2015

Shaver series 9000iF DESIGN AWARD 2015

Specifications

Shaving Performance

Shaving system: V-Track blade system PRO, Super Lift & Cut Action, V-Track Precision PRO Blades

Contour following: 8 direction ContourDetect Heads

SkinComfort: Aquatec Wet and Dry

Personal Comfort Settings: Sensitive-Normal-Fast settings

Styling: Integrated pop-up trimmer

Accessories

SmartClick: Beard styler

SmartClean PLUS: Cleans, Lubricates, Dries, Charges, Cleaning cartridge (included)

Pouch: Travel pouch

SmartClean: Cleaning cartridge (included)

Ease of use

Display: % Battery Level Indicator, Cleaning indicator, Battery low indicator, Replace shaving heads indicator, Travel lock indicator

Cleaning: Fully washable

Design

Colour: Brushed chrome

Handle: Ergonomic grip and handling

Power

Battery Type: Lithium-ion

Charging: 1 hour full charge, Quick charge for 1 shave, Quick charge 5 min for 1 shave

Automatic voltage: 100-240 V

Max power consumption: 9 W

Stand-by power: 0.1 W

Service

2 year guarantee

Replacement head: Replace every 2 yrs with SH90

Software

Software update: Philips offers relevant software updates for a period of 2 years after the date of purchase

