

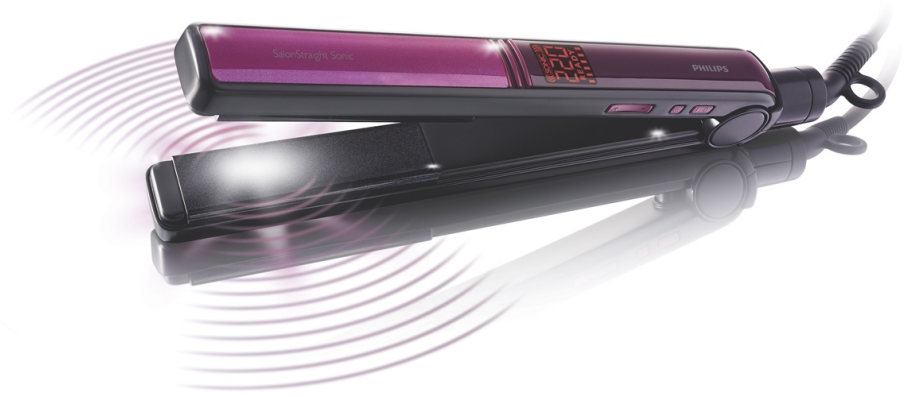
PHILIPS

Straightener

SalonStraight Sonic



HP4666/03



SalonStraight Sonic

Salon speed, salon results

Ease of use

- 1.8 m cord for maximum flexibility
- Digital settings with adjustable heat to get smooth results

Time saving

- Sonic Technology for great results in less time

Beautifully styled hair

- Up to 30% faster results*
- Ready to use within 60 seconds
- 220C professional high heat for perfect salon results

Less hair damage

- Swivel cord prevents tangled wires
- Ceramic Nano-Diamond plates for smooth gliding

Highlights

Sonic Technology

Sonic Technology for great results in less time

Specifications

Technical specifications

Voltage: 220-240 V

Cord length: 1,8 m

Power: 56 W

Material housing: Nylon+FG

Serviceability

Replacement

Hair type

Current hair style: Straight, Wavy, Curly

End result: Straight

For fragile hair

Hair length: Long, Medium

Hair thickness: Thin, Thick

