

# PHILIPS

## Hairdryer

### DryCare Advanced

ThermoProtect Ionic

2200W

Ionic Care

with Volume Diffuser



HP8233/09



Fast dry at a lower temperature with  
ThermoProtect  
with volume diffuser & 11mm styling nozzle.

Protect your hair while enjoying fast drying results. This hair dryer has multiple speed and temperature settings. Features include ThermoProtect for fast drying at a constant caring temperature, Ionic Care & TurboBoost.

#### Beautifully styled hair

- Professional 2200W for perfect salon results
- Ultra slim styling nozzle of 11mm for precision styling
- Adds volume, maximising thickness, curls and bouncy styles
- Turbo boost for extra fast drying
- Six flexible speed and temperature settings for full control
- Cool Shot sets your style

#### Less Hair Damage

- ThermoProtect temperature setting
- Ionic conditioning for shiny, frizz-free hair

#### Easy to use

- Elegant, feminine design emphasising performance and quality
- 2 m cord for ease of use
- Easy storage hook for convenient storage

# Highlights

## Premium Design



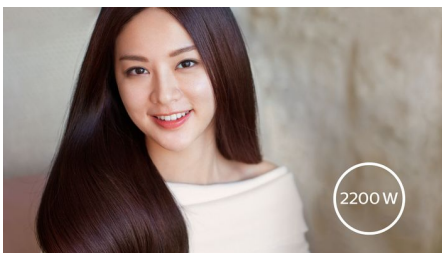
This hairdryer embodies a modern, sophisticated approach to design. Soft, fluid contours and elongated proportions subtly communicate femininity while precision detailing and high quality materials and finishes are evidence of the product's superior performance.

## ThermoProtect temperature



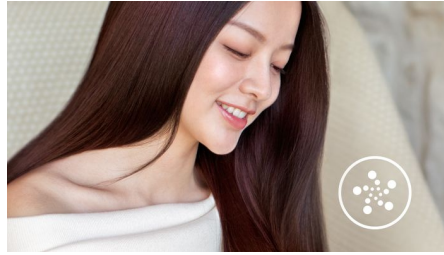
The ThermoProtect temperature provides the optimal drying temperature and gives additional protection from overheating the hair. With the same powerful airflow, you will get the best results in a caring way.

## Professional 2200W



This 2200W professional hairdryer creates a powerful airflow. The resulting combination of power and speed makes drying and styling your hair quicker and easier.

## Ionic conditioning



Give your hair instant care with ionic conditioning. Charged negative ions eliminate static, condition your hair, and smooth the hair cuticles to intensify hair's shine and glossiness. The result is smooth and frizz-free hair with beautiful shine.

## Speed and temperature settings



The speed and heat required can be easily adjusted to create the perfect style. Six different settings ensure full control for precise and tailored styling.

## Ultra slim styling 11mm nozzle



The ultra thin styling nozzle concentrates the flow of hair through the 11mm nozzle for precision styling on specific areas. Great for touch ups or to set your style.

## Turbo boost



The turbo boost button increases the airflow, to dry your hair even quicker.

## Asymmetric volume diffuser



The volume diffuser has a unique asymmetric design that is contoured to the head, making it easier and more intuitive to use. The diffuser also spreads the flow of air across the hair, drying hair more healthy, boosting volume and reducing frizz. For best results, hold close to the crown and root area and let the diffuser's fine textured pins encourage volume, add bounce and shape curls.

## Cool Shot



A must-have professional function for hair stylists. The Cool Shot button provides an intense burst of cold air. It is used after styling to finish and set the style.

# Specifications

**Technical specifications**

Voltage: 220 V

Frequency: 60 Hz

Wattage: 2200 W

Power: 2200 W

Color/finishing: Glossy Black & Purple gradient

Housing material: PC

Motor: DC Motor

Cable length: 2 m

**Features**

Foldable handle: No

Cool shot

Dual voltage: No

Travel pouch: No

Ceramic coating: Ceramic Element

Ion conditioning

Hanging loop

Diffuser: Asymmetric volume diffuser

Nozzle / Concentrator: Ultra slim styling 11mm nozzle

Number of attachments: 2

Turbo Boost

**Service**

2-year guarantee

**Weight & dimensions**

A-Box Dimensions: Length = 63cm, Width = 35cm, Height = 25cm

A-Box Weight: 6.3kg

F-Box Dimensions: Depth = 11cm, Height = 23cm, Width = 31cm

F-Box weight: 1kg

Product size: Width = 22cm, Height = 31cm, Length = 10cm

Product weight (excl. pack): 0.6kg

