

PHILIPS

Wet and dry electric shaver

Shaver series 9000

V-Track Precision Blades

8-direction
ContourDetectHeads

SmartClick beard styler



S9551/42



Perfection in every pass

Cuts up to 20% more hair* in a single pass

The Shaver 9000 is our most advanced shaver yet. The unique contour detect technology offers exceptional coverage over every contour of your face, and the V-Track system guides hairs into the best cutting position for the closest results.

Designed for perfection

- Blades perfectly guide hairs into position for a close shave
- Heads flex in 8 different directions for a superb result

A comfortable shave

- Personalize your shave by choosing between three settings
- Get a comfortable dry or refreshing wet shave with Aquatec

Easy to use

- Monitor shaver functions at a glance
- 50 minutes cordless shaving after a one-hour charge
- Shaver can be rinsed clean under the tap
- With 2 year guarantee

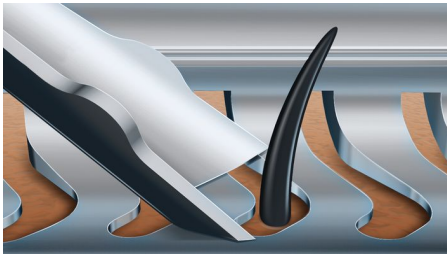
Get the most of your shaver

- Click-on beard styler with 5 length settings



Highlights

V-Track precision blade system



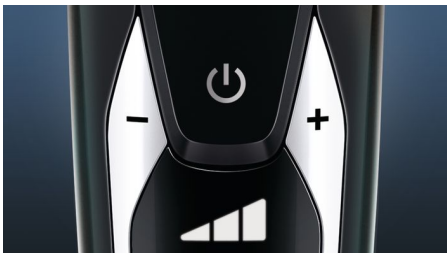
Get the perfect close shave. The V-Track Precision Blades gently position each hair in the best cutting position, even the flat laying and different length of hairs. Cuts 30% closer in less strokes leaving your skin in great condition.

8-direction ContourDetectHeads



Follow every contour of your face and neck with 8-directional ContourDetect heads. You'll catch 20% more hairs with every pass. Resulting in an extremely close, smooth shave.

Personal comfort settings



Choose between 3 modes to customize your shave: Sensitive – for a gentle, yet thorough shave. Normal – for a thorough, everyday shave. Fast – for a quick shave that saves you time.

Aquatec Wet & Dry



Choose how you prefer to shave. With the Aquatec Wet & Dry seal, you can opt for a quick yet comfortable dry shave. Or you can shave wet – with gel or foam – even under the shower.

SmartClick beard styler



Change your look with the SmartClick Beard Styler attachment. Choose from 5 length settings to create anything from a perfect stubble look to a short, neatly trimmed beard. Rounded tips and combs are designed to prevent skin irritation.

5 level LED display



You can easily see how much power is left with the 5-level LED display. Your Philips close shaver will not only tell you when it's time to charge, it has indicators for locking, cleaning and replacing the head.

50 minutes of cordless shaving



Our advanced charging system gives you two convenient options: charge for one hour and you'll get 50 minutes of running time, or do a quick charge for one full shave. All 9000 Series Shavers contain a powerful energy-efficient, long-lasting lithium-ion battery. They are designed to operate only in cordless mode, to ensure you'll always be safe when shaving with water, even under the shower.



IF DESIGN AWARD 2015

Shaver series 9000Precision, control and maneuverability are the defining features of the 9000 shaver. The V-Track system guides hairs into the best cutting position for the closest result, while fully flexible eight directional heads catch more hairs for a clean shave in fewer strokes. The "AquaTec Wet & Dry" seal of this shaver allows for a comfortable dry shave or a refreshing wet shave, using a shaving gel or foam for extra skin comfort.



asimpleswitch.com

Philips Green Logo

Philips Green Products can reduce costs, energy consumption and CO2 emissions. How? They offer a significant environmental improvement in one or more of the Philips Green Focal Areas – Energy efficiency, Packaging, Hazardous substances, Weight, Recycling and disposal and Lifetime reliability.

Specifications

Shaving Performance

Contour following: 8-direction

ContourDetectHeads

SkinComfort: AquaTec Wet & Dry

Shaving system: V-Track Precision Blade

System, Super Lift & Cut Action

Personal Comfort Settings: Sensitive-Normal-

Fast settings

Accessories

SmartClick: Beard styler

Pouch: Travel pouch

Ease of use

Display: 5 level battery indicator, Battery low indicator, Cleaning indicator, Replace shaving heads indicator, Travel lock indicator

Cleaning: Fully washable

Design

Color: Argus

Handle: Ergonomic grip & handling

Power

Battery Type: Lithium-ion

Run time: 50 min / 17 shaves

Charging: 1 hour full charge, Quick charge for 1

shave

Automatic voltage: 100-240 V

Stand-by power: 0.1 W

Max power consumption: 9 W

Service

2-year guarantee

Replacement head: Replace every 2 yrs with

SH90

