

# PHILIPS

Wet and dry electric shaver

Shaver series 9000

V-Track Precision Blades

50 min cordless use/1h charge

SmartClick beard styler



S9511/41



## Perfection in every pass

Cuts up to 20% more hair\* in a single pass

The Shaver 9000 is our most advanced shaver yet. The unique contour detect technology offers exceptionally coverage over every contour of your face, and the V-Track system guides hairs into the best cutting position for the closest result.

### Designed for perfection

- Blades perfectly guide hairs into position for a close shave
- Heads flex in 8 different directions for a superb result

### A comfortable shave

- Lifts hairs to cut comfortably close
- Personalize your shave by choosing between three settings
- Get a comfortable dry or refreshing wet shave with Aquatec

### Get the most of your shaver

- Click-on beard styler with 5 length settings

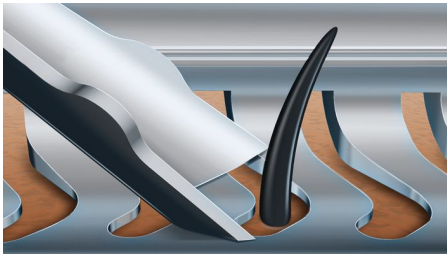
### Easy to use

- Monitor shaver functions at a glance
- 50 minutes cordless shaving after a one-hour charge
- With 2 year guarantee



# Highlights

## V-Track precision blade system



Get the perfect close shave. The V-Track Precision Blades gently positions each hair in the best cutting position, even the flat laying and different length of hairs. Cuts 30% closer in less strokes leaving your skin in great condition.

## 8-direction ContourDetectHeads



Follow every contour of your face and neck with 8-directional ContourDetect heads. You'll catch 20% more hairs with every pass. Resulting in an extremely close, smooth shave.

## Super Lift & Cut Action



Shave closer with the dual-blade Super Lift & Cut action. The first blade raises each hair while the second blade comfortably cuts below skin level, for really smooth results.

## Personal comfort settings



Choose between 3 modes to customize your shave: Sensitive – for a gentle, yet thorough shave. Normal – for a thorough, everyday shave. Fast – for a quick shave that saves you time.

## Aquatec Wet & Dry



Choose how you prefer to shave. With the Aquatec Wet & Dry seal, you can opt for a quick yet comfortable dry shave. Or you can shave wet – with gel or foam – even under the shower.

## SmartClick beard styler



Change your look with the SmartClick Beard Styler attachment. Choose from 5 length settings to create anything from a perfect stubble look to a short, neatly trimmed beard. Rounded tips and combs are designed to prevent skin irritation.

## 5 level LED display



You can easily see how much power is left with the 5-level LED display. Your Philips close shaver will not only tell you when it's time to charge, it has indicators for locking, cleaning and replacing the head.



## iF DESIGN AWARD 2015

Shaver series 9000Precision, control and maneuverability are the defining features of the 9000 shaver. The V-Track system guides hairs into the best cutting position for the closest result, while fully flexible eight directional heads catch more hairs for a clean shave in fewer strokes. The "AquaTec Wet & Dry" seal of this shaver allows for a comfortable dry shave or a refreshing wet shave, using a shaving gel or foam for extra skin comfort.



[asimpleswitch.com](http://asimpleswitch.com)

## Philips Green Logo

Philips Green Products can reduce costs, energy consumption and CO2 emissions. How? They offer a significant environmental improvement in one or more of the Philips Green Focal Areas – Energy efficiency, Packaging, Hazardous substances, Weight, Recycling and disposal and Lifetime reliability.

# Specifications

## Shaving Performance

**SkinComfort:** AquaTec Wet & Dry

**Contour following:** 8-direction

ContourDetectHeads

**Shaving system:** V-Track Precision Blade

System, Super Lift & Cut Action

**Personal Comfort Settings:** Sensitive-Normal-

Fast settings

## Accessories

**SmartClick:** Beard styler

**Pouch:** Travel pouch

## Ease of use

**Display:** 5 level battery indicator, Cleaning indicator, Battery low indicator, Replace shaving heads indicator, Travel lock indicator

**Cleaning:** Fully washable

## Design

**Color:** Dark Caramel

**Handle:** Ergonomic grip & handling

## Power

**Battery Type:** Lithium-ion

**Run time:** 50 min / 17 shaves

**Charging:** Charge 1 hour for 50 min use, Quick charge for 1 shave

**Automatic voltage:** 100-240 V

**Max power consumption:** 9 W

**Stand-by power:** 0.1 W

## Service

**2-year guarantee**

**Replacement head:** Replace every 2 yrs with SH90

## Software

**Software update:** Philips offers relevant software updates for a period of 2 years after the date of purchase

